

COMPANY INTRODUCTION

公司简介

Dongguan Henggui Electronic Technology Co., Ltd. NOGFS has been focusing on antenna product research and design since its establishment in 2010, and has since our R&D team has developed TEM24 multi probe OTA measurement system microwave anechoic chamber, accumulated rich experience in the industry, and has formed a 27 Mhz to 6 GHz to thousands of antennas in various frequency bands of GHz. Our company focuses on FM, DVB, GSM, W-CDMA, 3G, WLAN, Bluetooth, Development of Wimax, UWB, and 5G antennas.

At the same time, the company produces and sells original IPEX terminal wires, IPEX series 1st, 2nd, 3rd, and 4th generation terminal wires, as well as IPEX third-generation terminals for mobile phones, Connection line, SMA adapter cable. Our R&D center is located in Shenzhen Science and Technology Park, and our R&D products are widely used in intelligent PDA and wireless applications, POS machine, smart home, wireless router, wireless meter reading, MID, DVB digital TV, wireless camera, smart grid, vehicle carrying speed line, wireless industrial control and monitoring, Zigbee technology in the wireless field, Internet of Things, wireless data transmission, satellite positioning, wireless broadcasting and television, etc. there are various products and antenna types in the wireless field.

After years of accumulation, sedimentation, and innovative development, the market covers the domestic East and South China regions as well as the North American and European markets abroad, with high product quality. The quantity has received unanimous praise from a large number of customers. The company has a fully automatic oscillator assembly line, multiple imported vector network analyzers, and spectrum analyzer. The analyzer, third-order intermodulation tester, microwave anechoic chamber, antenna simulation testing magnetic field and other equipment are fully equipped with hardware. The company believes in "sincerity, service" the corporate culture of "practicality, exploration, and innovation" and the implementation of the talent concept of "selection, retention, appointment, and utilization" have formed pre-sales and after-sales services, research and development, manufacturing, and product development. Management team elites. Strictly control the entire process of product quality, including incoming material inspection, process control inspection, and finished product shipment sampling.

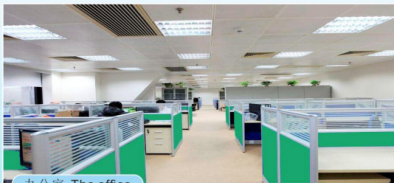
The product is strictly executed according to the customer's samples and specifications, and can also be designed according to the specific characteristics of the customer's product, providing OEM services. The company has a sound quality management system and has already introduced ISO9001-2008. Strictly follow the ISO9001-2008 quality management system for management, and the design, manufacturing, and delivery of products are strictly controlled by QC during the process. Customer satisfaction is our persistent pursuit. The company adheres to the values of integrity and regards technology as its core competitiveness. The product market responds quickly, the new product debugging and development cycle is short, the product quality is excellent, and the sales team has a strong awareness of serving the market. Welcome customers to communicate and negotiate related business.

自2010年成立以来一直专注天线产品研发设计,拥有自己的研发团队TEM24多探OTA测量系统微波暗室,行业沉淀积累经验丰富,已形成了27MHz至6GHz各频段,多达上千款天线。我司专注FM、DVB、GSM、W-CDMA、3G、WLAN、Bluetooth、Wimax、UWB、5G天线开发。

同时,公司生产销售ipeX原厂端子线材, IPEX系列1代2代3代4代端子线,手机专用ipeX三代端子连接线, SMA转接线线材。我司研发中心在深圳市科技园,研发产品广泛应用于智能PDA、无线POS机、智能家居、无线路由器、无线抄表、MID、DVB数字电视、无线摄像机、智能电网、车载天线、无线工控和监测、zigbee技术无线领域、物联网领域、无线数传、卫星定位、无线广播电视等无线领域的各类产品,天线种类齐全。

经过多年的积累沉淀和创新发展,市场涵盖国内华东华南区域及国外北美欧洲市场,产品质量受到广大客户一致好评。公司拥有全自动振子装配流水线,多台进口重量网络分析仪、频谱分析仪、三阶互调测试仪、微波暗室、天线模拟测试磁场等设备,硬件配套齐全。公司信奉“真诚、务实、开拓、创新”的企业文化,实施“选、留、任、用”的人才观,形成了售前售后服务、研发制造、品质团队精英。严格“来料检、制程控制检验、成品出货抽检”的产品质量全过程控制。

产品按照客户来料及规格说明严格执行,也可根据客户具体产品的特点设计,提供OEM服务。公司有完善的质量管理体系,已经导入ISO9001-2008。严格按照ISO9001-2008质量管理体系管理,产品的设计、制造、交付由QC严格把关过程控制。客户的满意是我们的坚持不懈的追求。公司秉承诚信价值观,以技术为核心竞争力。产品市场反应速度快、新产品调试开发周期短、产品品质优、销售团队服务市场意识强。欢迎广大客户沟通洽谈相关业务。



办公室 The office



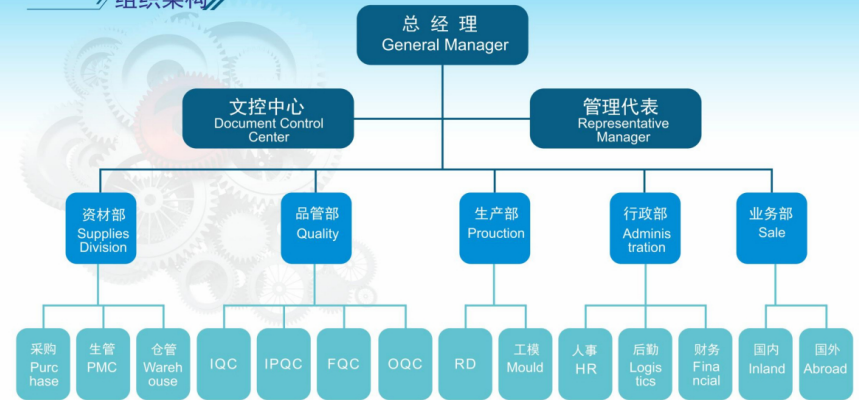
样品室 Sample room



Certificate

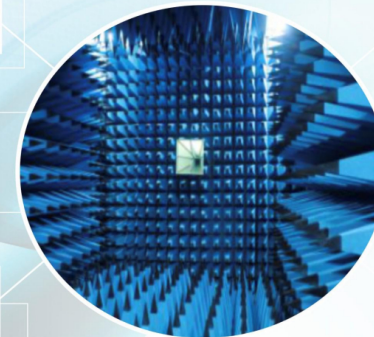
Organization

组织架构



优良的质量与性能 Quality and Performance 可靠性和耐用性 Reliability and Durability 价格竞争力的优势 Competitive Price 诚信的合作伙伴 Reliable and Honest Partnership 高效率研发及生产 Rapid Design and Delivery

实验室 laboratory



WIMAX, WIFI, WLAN ACCESS Point Antenna
IEEE 802.11a / b / g / n ,IEEE 802.16 a / b / e
2.4Ghz~Ghz & 4.9Ghz~5.9Ghz (2G~11Ghz)

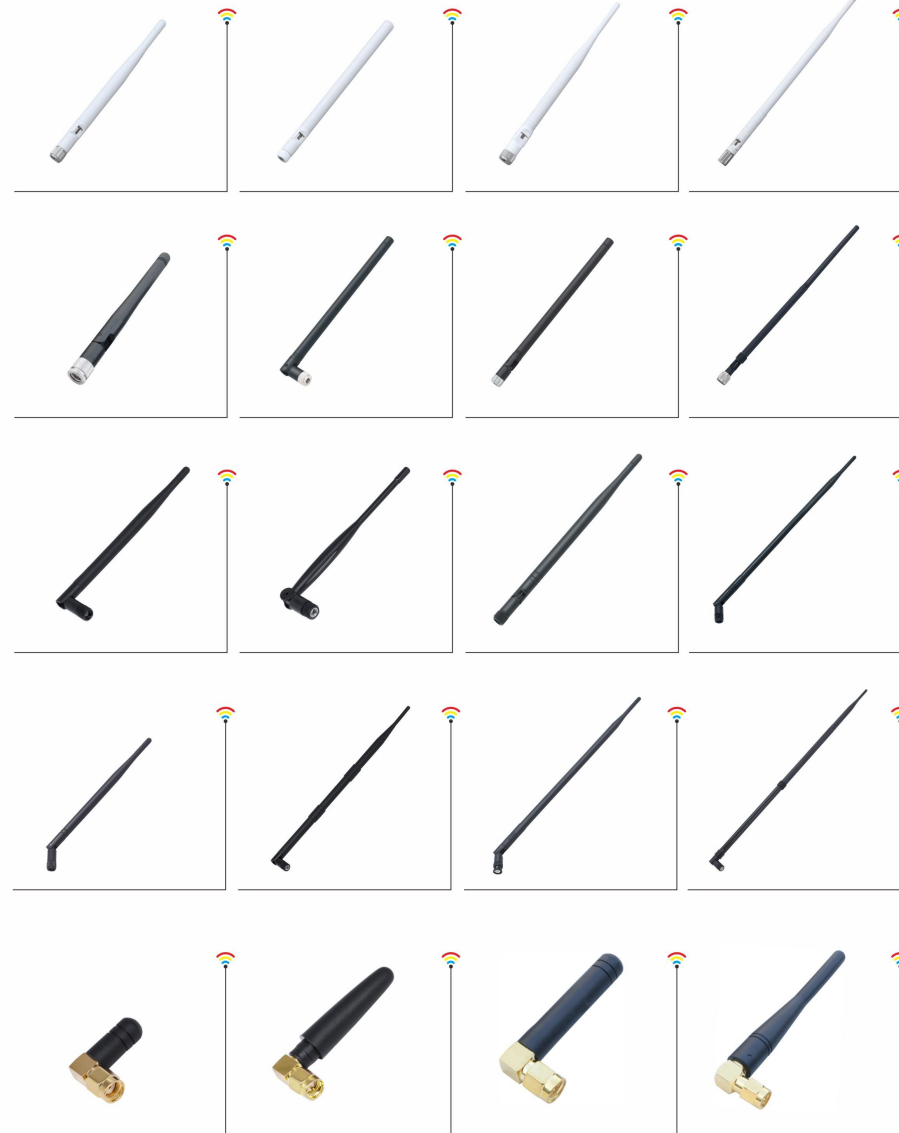
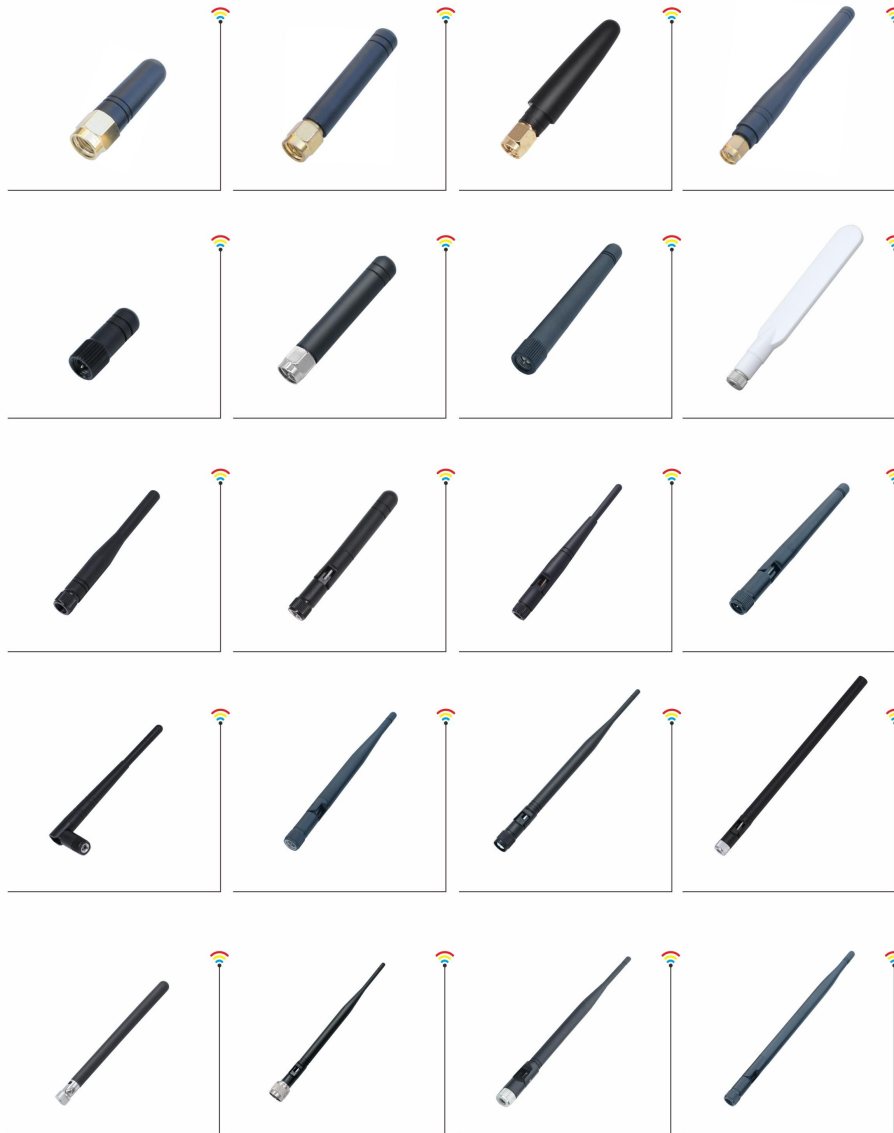


Mechanical Specification

Radiator-Copper wire, Spring, Steel wire
 Connector-- TNC / SMA / N / MMCX / I-PEX
 Working Temperature-- -30° C~+60° C
 D-90° adjustable swivel and water proof design
 ROHS-Compliant.

Monopole and Dipole Antennas

This series "Rubber Duck" Monopole and Dipole Antenna provide broad coverage and different gain options. it's designed by a coaxial sleeve or steel/copper wire an Omni-directional pattern. The series antenna are ideally suited for Wireless LAN AP, Wireless Video, GSM, RFID, DVB-T, WIFI, WIMAX, ISM and Hotspot applications.



- Main Application: ■ WLAN ■ GSM ■ DVB-T ■ ISM ■ WIMAX
- The dimension is subject to change With different frequency and connector type request.

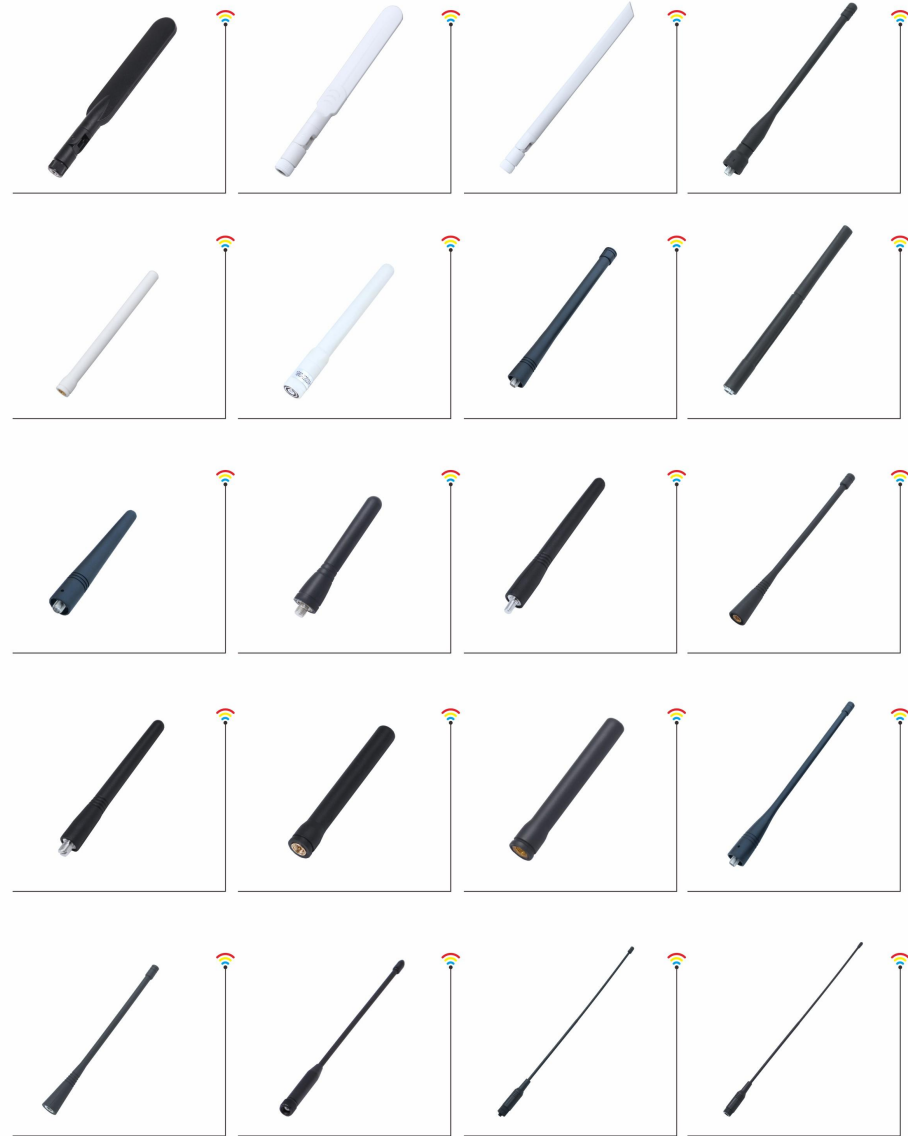
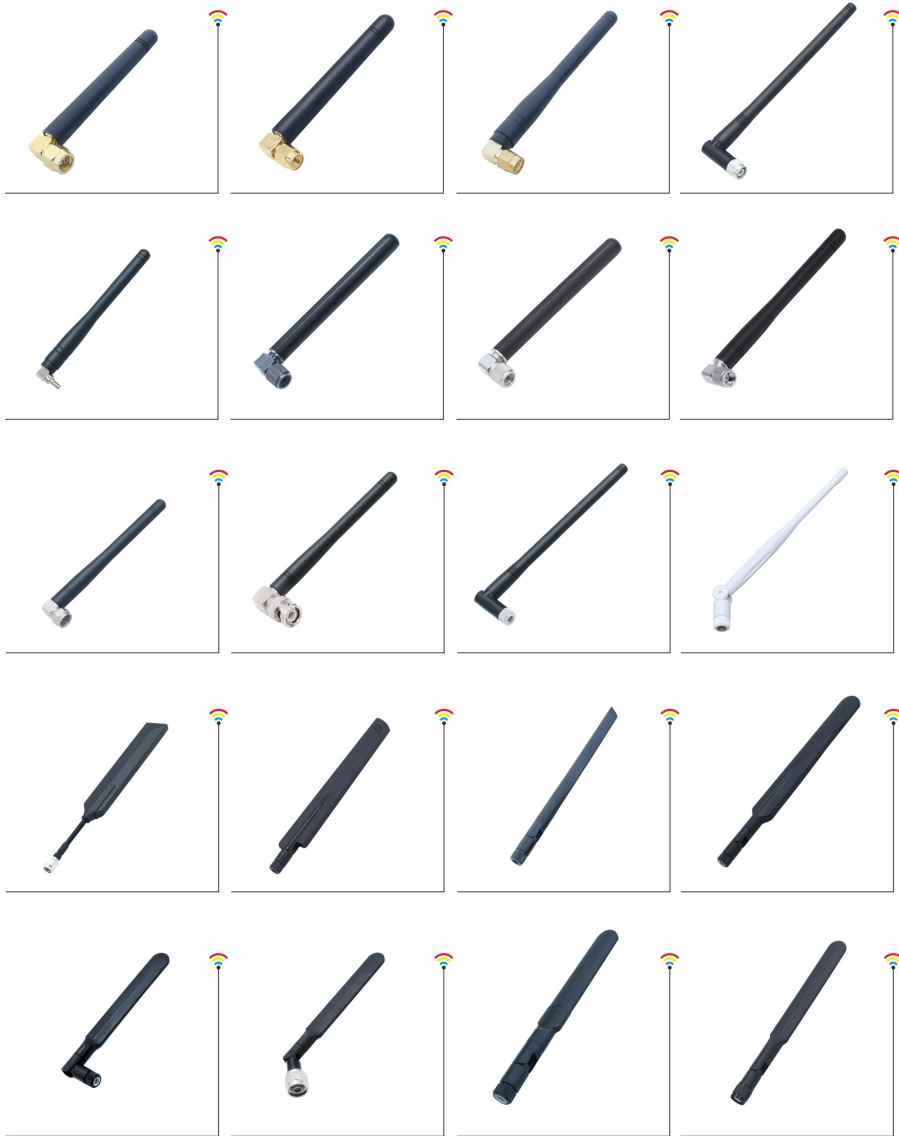
WIMAX, WIFI, WLAN ACCESS Point Antenna
IEEE 802.11a / b / g / n ,IEEE 802.16 a / b / e
2.4Ghz~Ghz & 4.9Ghz~5.9Ghz (2G~11Ghz)

All antenna can be customized.(Content include: shape,logo, frequency, gain,color,connector etc.)



Electronic Specification

Frequency--Single / Dual / Tri Band /Quad Band
 400Mhz-870Mhz, 900Mhz 1800Mhz / 1900Mhz and 2.4Ghz / 5Ghz systems
 Impedance--Normal 50 Ohm / 75 Ohm
 Polarization--Linear Vertical / Omni-directional pattern
 Gain--2~10dBi



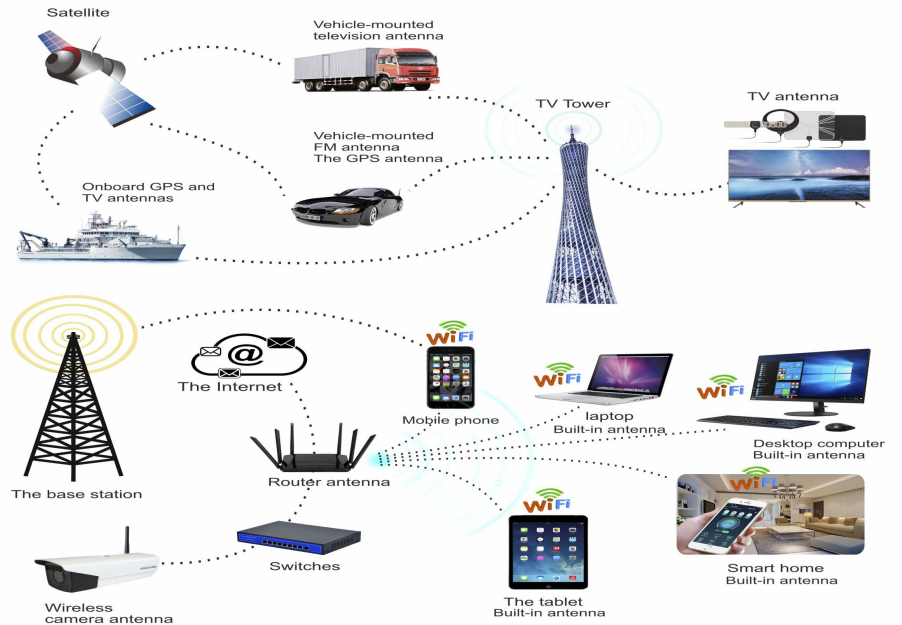
• Main Application: ■ WLAN ■ GSM ■ DVB-T ■ ISM ■ WIMAX
 • The dimension is subject to change With different frequency and connector type request.

WIMAX, WIFI, WLAN ACCESS Point Antenna
IEEE 802.11a / b / g / n ,IEEE 802.16 a / b / e
2.4Ghz~Ghz & 4.9Ghz~5.9Ghz (2G~11Ghz)



Antenna Type 天线类型	Frequency 频率范围 (MHz)	Gain 增益dBi	Radiation 辐射方向	Voltage 工作电压V	Max Input Power(W) 最大输出功率	VSWR 驻波比	Band 适用频段	Impedance 阻抗Ω
AP Antenna 胶棒天线	315	0dBi, 1dBi, 2dBi, 3dBi, 4dBi, 5dBi, 6dBi, etc.	Omni	DC3.05.0	50W	≤1.5	WLAN	50
	433		Omni	DC3.05.0	50W	≤3.5	WLAN	50
	450		Omni	DC3.05.0	50W	≤3.5	WLAN	50
	470		Omni	DC3.05.0	50W	≤2.0	WLAN	50
	868		Omni	DC3.05.0	50W	≤2.0	WLAN	50
	915		Omni	DC3.05.0	50W	≤2.0	WLAN	50

• Main Application: ■ WLAN ■ GSM ■ DVB-T ■ ISM ■ WIMAX
• The dimension is subject to change With different frequency and connector type request.

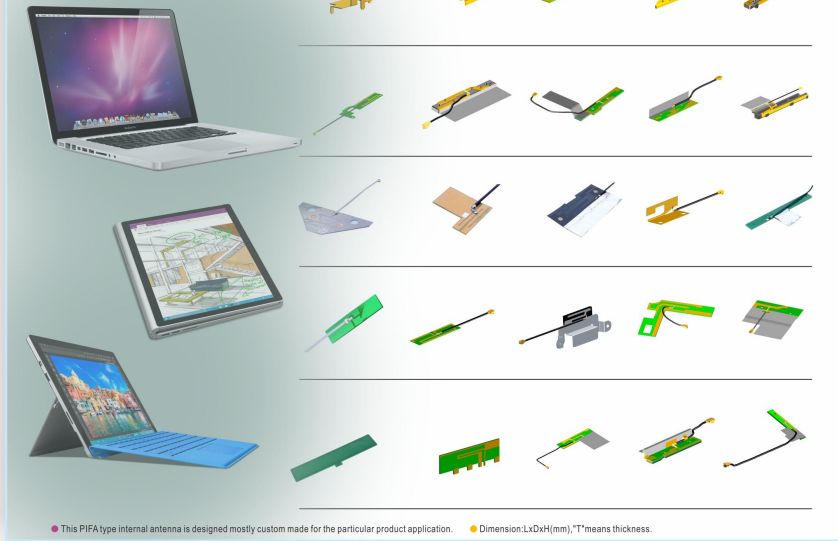


Antenna Type 天线类型	Frequency 频率范围 (MHz)	Gain 增益dBi	VSWR 驻波比	Band 适用频段	Impedance 阻抗Ω
AP Antenna 胶棒天线	470-870Mhz	0dBi	≤3.5	DVB-T	50
	800/900/1800/ 1900/2100	0dBi, 1dBi, 2dBi	≤3.5	GSM/ISM	50
	902-928	0dBi	≤3.5	ISM	50
	2400-2500/ 5150-5850	2dBi, 3dBi, 4dBi, 5dBi, 7dBi, 8dBi, 9dBi, etc.	≤2.0	WLAN	50
	2400-2500	1dBi, 2dBi	≤2.0	WLAN	50
	2500-2700	1dBi, 2dBi, 3dBi, 4dBi, 5dBi, 7dBi, 8dBi, 9dBi, etc.	≤2.0	WIMAX	50
Connector type 接头类型	SMA/SMB TNC/MMCX/TNC/BNC or any can be customized				
Cable Lead Type 出线接头类型	IPEX/SMA/SMB MCX/MMCX or any can be customized				
Cable Type 线材类型	0.81/1.13 1.37/RG178 /RG316 or any can be customized				

Internal built-in antenna, Patch Antenna for Notebook PC WLAN-IEEE 802.11 a / b / g / n

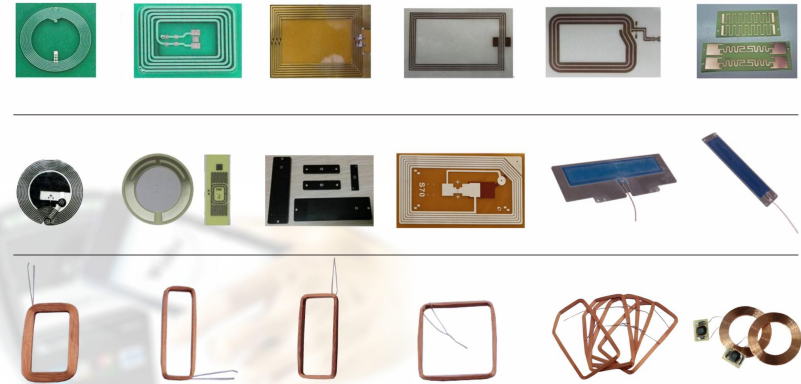


Tablet / Laptop Mobile Internet Device



● This PIFA type internal antenna is designed mostly custom made for the particular product application. ● Dimension:LxDxH(mm), "T" means thickness.

NFC chip antenna

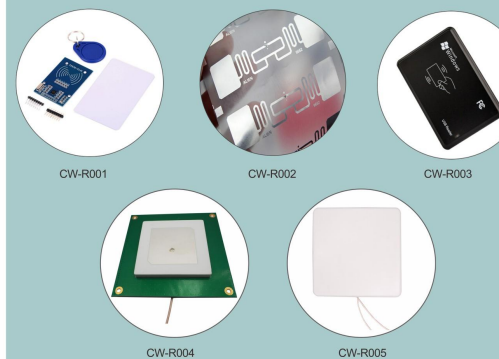


产品名称 Product name	NFC 天线 NFC antenna	工作温度 Working temperature	-10°C-65°C
可选面料 Optional material	不干胶铜箔纸 (PET基材) + 铝蚀刻 + 不干胶 (可打印, 可印刷) non-drying coated paper (PET base material) + aluminum etching + non-drying adhesive (printable and printable)	读取距离 Read distance	0-120CM (与天线、读写功率和工作环境有关) (related to antenna, reader power and working environment)
可选工艺 Optional process	空白微料印刷 blank/digital printing	数据保存 Data preservation	≥10# More than ten years
应用描述 Application description	仓储管理, 服装吊牌, 资产管理, 物流管理, 其它二次加工, 打开手机应用, 拨打电话, 存储信息名片, 写网址, 信息交换等等... warehouse management, garment hangtag, asset management, logistics management, other secondary processing open mobile applications, call the phone, store information card, write website, information exchange, etc.		

Specification

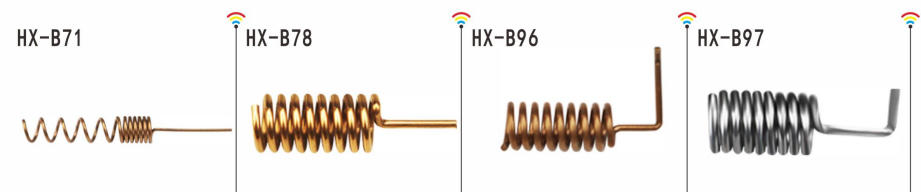
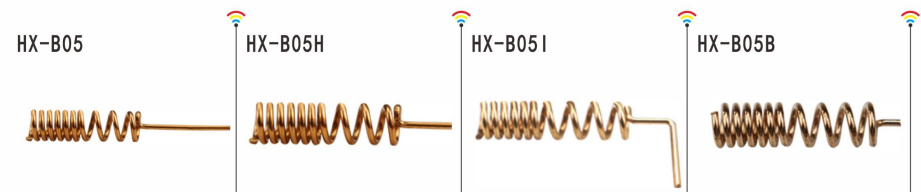
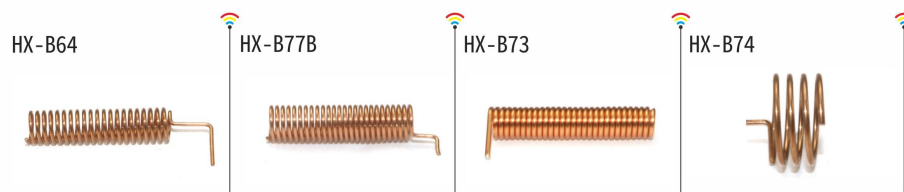
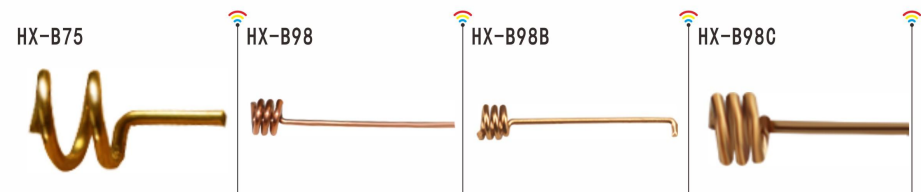
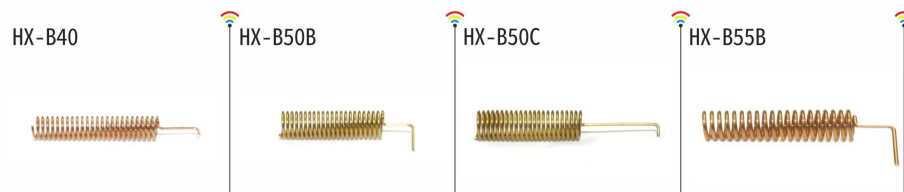
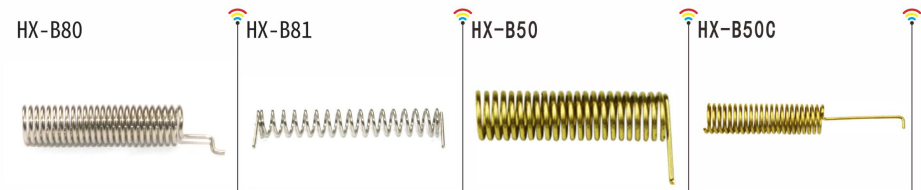
Antenna Type 天线类型	Materials	Frequency 频率范围 (MHz)	Gain 增益dBi	Voltage 工作电压
Internal Antenna 内置PCB,FPC, 金属片天线	PCB,FPC, MetalStrip	433MHz 800/900/1800/ 1900/2100MHz 824 - 960MHz/ 1710 - 2690MHz/ 2400 - 2500MHz/ 4900 - 5900MHz anybandyouneed.	2dBi, 3dBi, 4dBi, 5dBi, 7dBi, any canbe customized	3.0 - 5.0V
VSWR 驻波比	Impedance 阻抗Ω	Band 适用频段	Connector type 接头类型	Cable Type 线材类型
=2.0	50/70	GSM/GPRS/ISM /WLAN/WMAX	IPEX/SMA/SMB/ MCX/MMC etc.	0.81/1.13/1.37/ RG178r anycan be customized

RFID chip antenna



电气指标: Electrical indicators	
频率范围 FreqRange MHz	860-960MHZ
带宽 BandwidthMHz	100
增益 Gain	9
波瓣宽度 Horizontal Beamwidth °	Hor: 65Vert: 58
前后比 F/BRatio	≥23
驻波比 VSWR	≤1.3
阻抗 Impedance	50 Ω
极化方式 Polarization	圆极化 Circular polarization
最大功率 Max.Power	100W
接头型号 Connector	N-Female
防雷保护 Lightning Protection	直流接地 The dc grounding
机械指标: Mechanical Specifications	
抗风强度 RatedWindVelocity	60m/s
工作温度 Operatingtemperaturec	-40~80°C

Spring Antenna



* Main Application: 80-100MHz/170MHz/270/315/433/92/868/915/ISM/GPRS/CDMA/WIFI/4G/蓝牙/BT等
 * The dimension is subject to change With different frequency and connector type request.

Magnetic & suck cap base Extender Antennas

This magnetic or suck cap base antenna provide single or multi band for DVB-T, 900Mhz, 1800Mhz, 1900Mhz, 2.4Ghz, 5Ghz... The compact design of this type antenna is ideal for extending the operation coverage, the magnetic and suck cap base suitable for fixing to any flat and metal surfaces.



- IDVB-T, APMS, GSM, DCS, PCS, UMTS, ISM, WLAN, Wireless Video WIFI and WIMAX applications
- 1400Mhz - 870Mhz, 900M / 1800M / 1900M and 2.4G /5Ghz systems
- IAmplifier integrated active antenna
- IHigh performance and compact size
- IMagnetic mount or suck cap base mounting
- IFix or Tilt-Swivel flexibility, water proof application design
- ICable and Connector customizable
- IROHS-Compliant.



• Main Application: ■WLAN ■GSM ■DVB-T ■ISM ■WIMAX
 • The dimension is subject to change With different frequency and connector type request.

External Magnetic Mount and Suck Cap Antenna



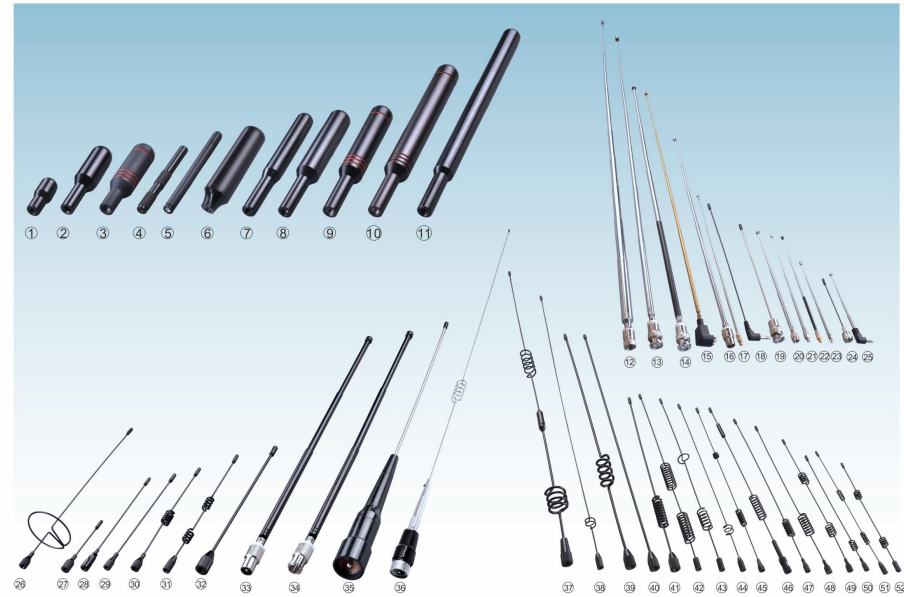
The various options of the antenna base are well suited for desktop for fixing to any flat metal surfaces. The antenna base provides the different mating interface of RF connectors or metal studs to fit any external antenna connector type with the different cable types to extending the wireless coverage. The magnetic or suck cap base are the options for more flexible fixing applications.



Disk antenna parameters

Antenna Type 天线类型	Frequency 频率范围 (MHz)	Gain 增益dBi	VSWR 驻波比	极化方式 Polarization	辐射方向 Radiation Direction 全向 Omnidirectional	Band 适用频段	Impedance 阻抗Ω	Connector type 接头类型	Cable Type 线材类型
Magnetic (Sucker) Antenna 磁盘天线	470-870	0dBi	≤1.5	垂直极化 Vertical	辐射方向 Radiation Direction 全向 Omnidirectional	DVB-T	50	SMA/SMB/PAL /CRC9/TS9/ MCX/MMCX/F /TNC/BNC or any can be customized	RG -174U RG58 1.5C2V or any can be customized
	800/900/1800/1900 /2100	0dBi, 1dBi, 2dBi				GSM/ISM	50		
	2400-2500	2dBi, 3dBi, 4dBi, 5dBi, 7dBi, 8dBi, 9dBi, etc.				WLAN	50		
	2500-2700	2dBi, 3dBi, 4dBi, 5dBi, 7dBi, 8dBi, 9dBi, etc.				WMAX	50		
Any band customized for you.									

• Main Application: ■ WLAN ■ GSM ■ DVB-T ■ ISM ■ WMAX
• The dimension is subject to change With different frequency and connector type request.



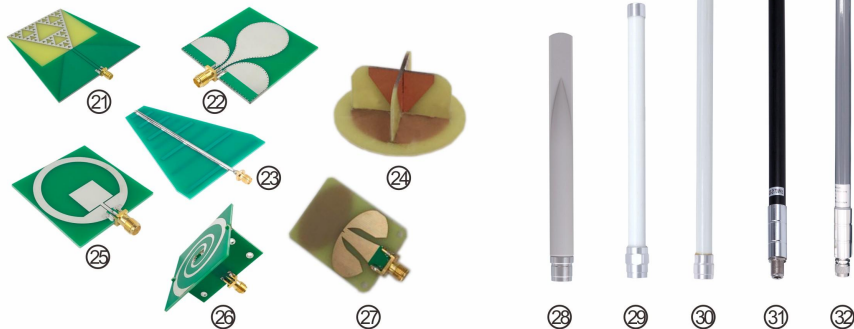
UWB Antenna

UWB(UltraWideband) is a carrier-free communication technology that transmits data using non-sinusoidal narrow pulses ranging from nanosecond to microsecond. By transmitting very low power signals over a wide spectrum, UWB can achieve data transmission rates of hundreds of mbits /s to several gbts /s within a range of about 10 meters.

UWB antenna, frequency limited to 3.1-10.6ghz, extremely wide, can use bandwidth above 1Ghz, or up to several GHz.

The system has the characteristics of large capacity, strong anti-interference performance, high transmission rate, low power consumption and good confidentiality.

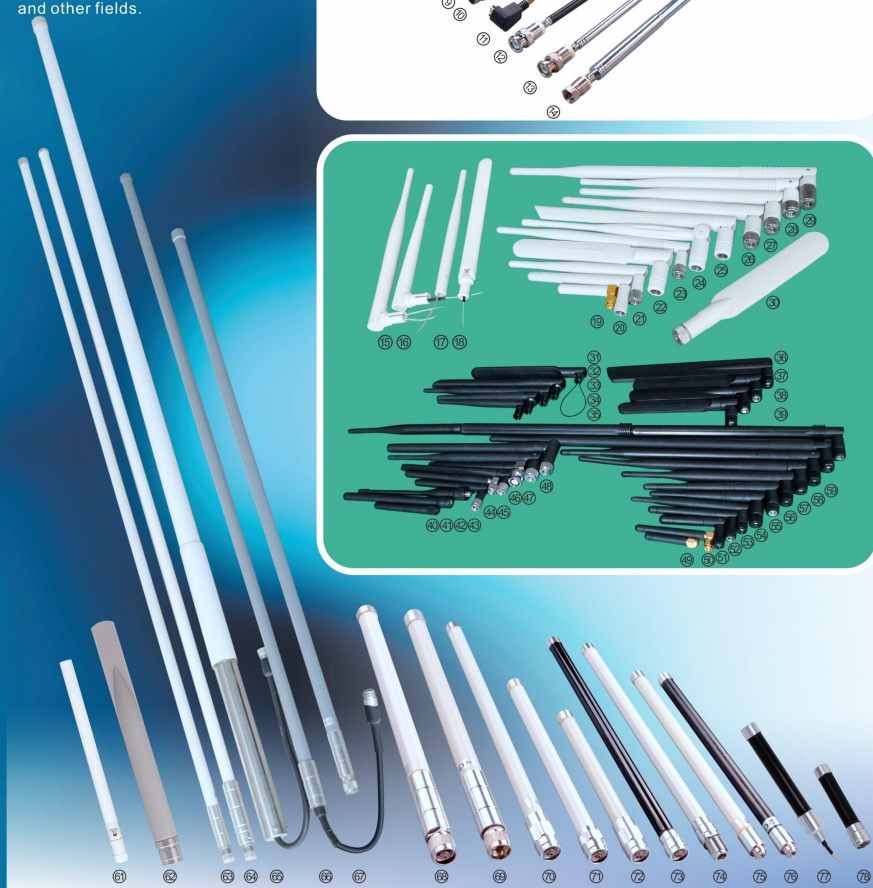
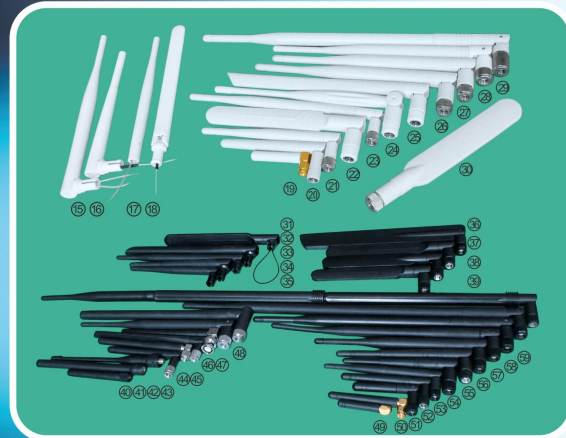
It is widely used in indoor communication, high-speed wireless LAN, home network, cordless telephone, safety detection, position determination, radar and other fields.



LoRa wireless transmission

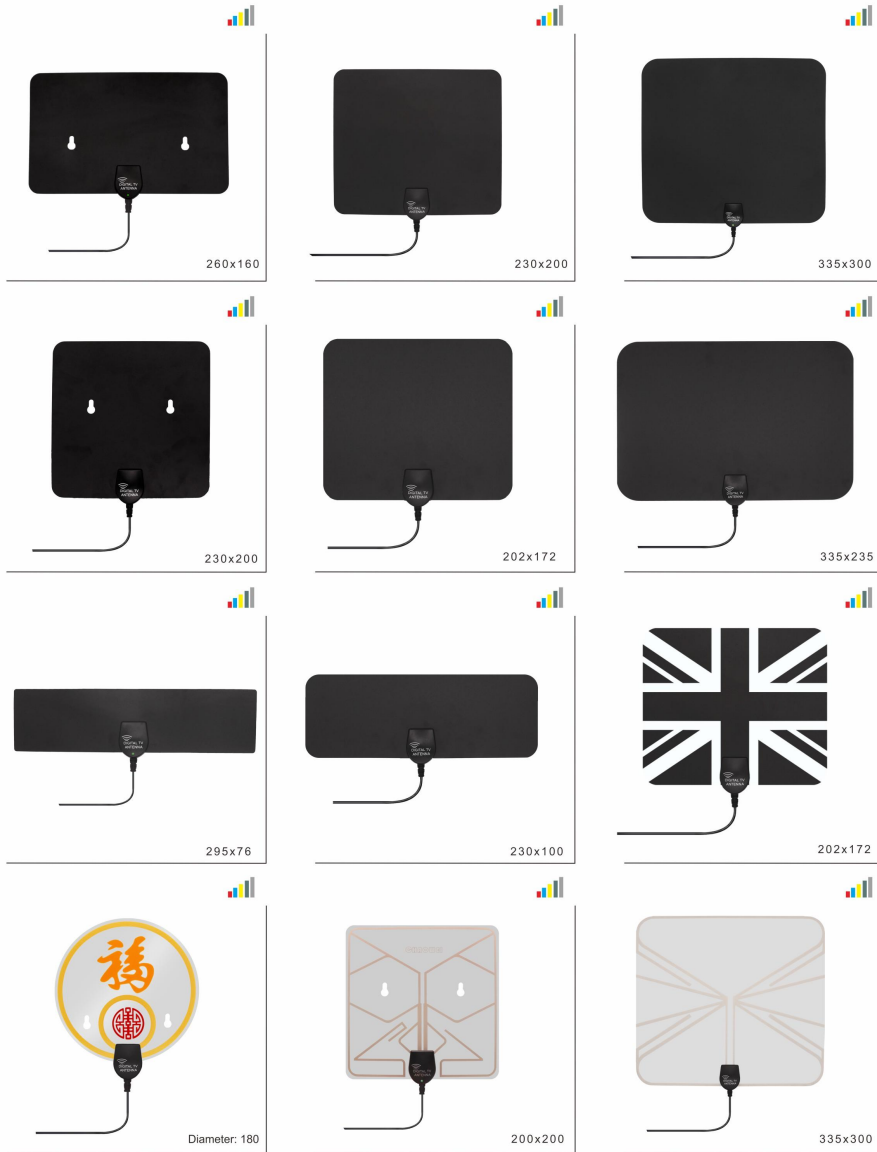
LoRa is one of the LPWAN communication technologies, which is a super-remote wireless transmission scheme based on spread spectrum technology. It provides users with a simple system that can realize long distance, long battery life and large capacity, and then extend the sensor network.

At present, the main frequency bands of LoRa include: 433MHz, 450MHz, 450-470MHz, 470-510MHz, 868MHz, 868-900MHz, 915MHz, 900-930MHz, etc. LoRa technology has characteristics of long distance, low power consumption (long battery life), multi-node and low cost. It is mainly used in intelligent meter reading, intelligent parking, intelligent agriculture, intelligent security, intelligent street lighting and other fields.



DVB-T / ISDB-T / ATSC Antenna for HD Digital TV

- 400MHz ~ 870MHz, 900M / 1800M / 1900M and 2.4G /5Ghz systems
- Amplifier integrated active antenna
- Cable and Connector customizable
- ROHS-Compliant.

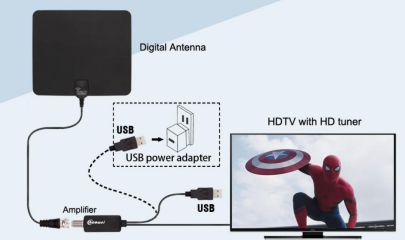


Size: mm

Application scenarios



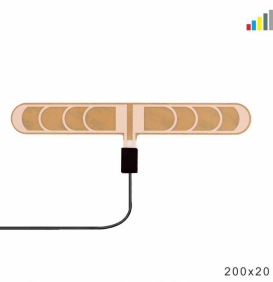
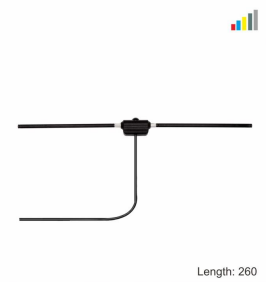
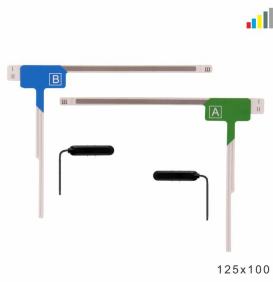
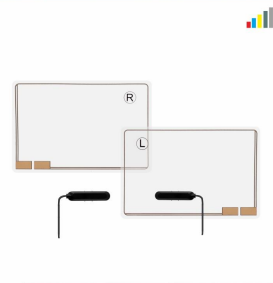
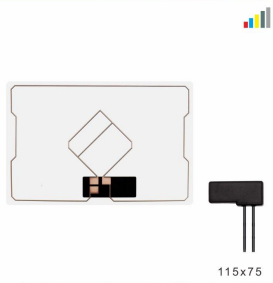
Trial method



HDTV antenna parameters

Antenna Type 天线类型	Frequency 频率范围 (MHz)	Gain 增益dBi	VSWR 驻波比	Voltage 工作电压	Current Protection 保护电流	Impedance 阻抗Ω	Connector type 接头类型	Cable Type 线材类型
Passive HDTV antenna (无源)	54MHz-108MHz/ 170-240/	5dBi	≤2.0	/	/	75	IEC/F/SMA or any customized	3C2V, 1.5C-2V or any can be customized
Active HDTV antenna (有源)	470-862MHz	25dBi	≤2.0	5V/12V	≤30毫安mA	75		

Vehicle Digital TV/FM radio Antenna
Windshield, Film and Patch
Antenna for cars



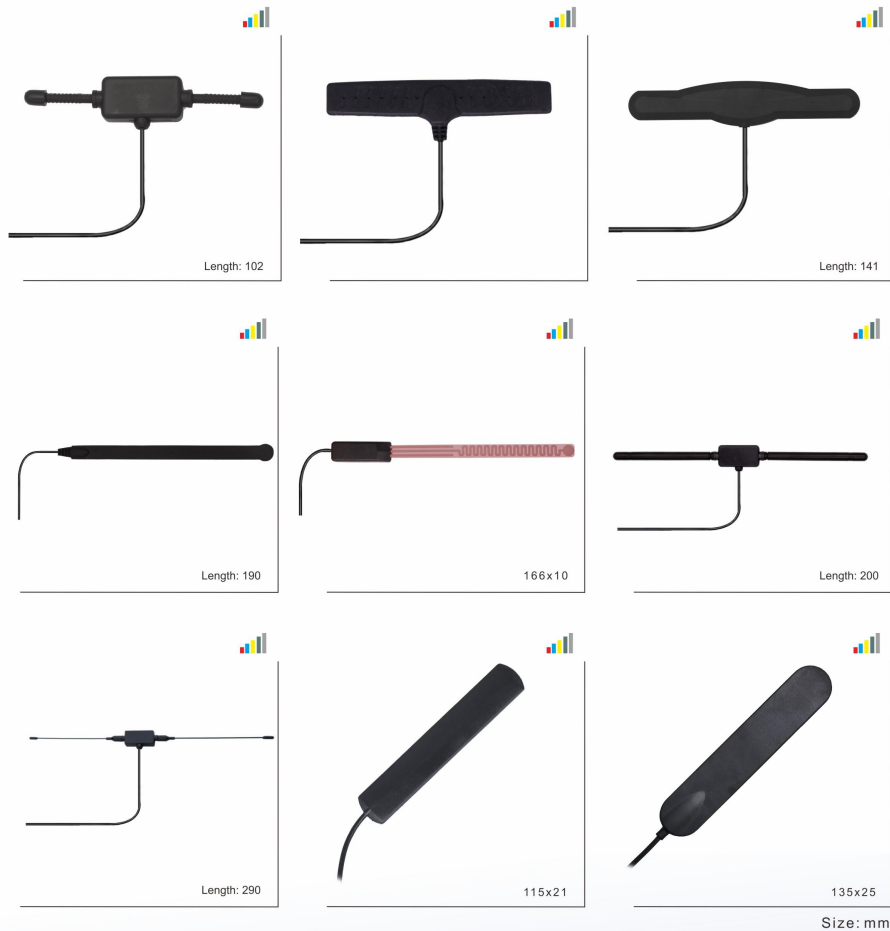
Specification

Active ISDB Antenna for Car	
Frequency Range(MHz)	470 - 862
Voltage(V)	8V
Current	≤20mA
Input Impedance(Ω)	75
Polarization Type	Vertical or Horizontal
V.S.W.R	≤2.0
Max Input Power(w)	50
Cable Type	3C2V, 1.5C-2V or any can be customized
Connector	SMA/VR1/GT13/GT16/HF201/Fakra

Passive ISDB Antenna for Car	
Frequency Range(MHz)	470 - 862
Input Impedance (Ω)	75
Polarization Type	Vertical or Horizontal
V.S.W.R	≤2.0
Max Input Power(w)	50
Cable Type	3C2V, 1.5C-2V or any can be customized
Connector	SMA/VR1/GT13/GT16/HF201/Fakra

The antenna connector for the vehicle





Vehicle-mounted DAB antenna

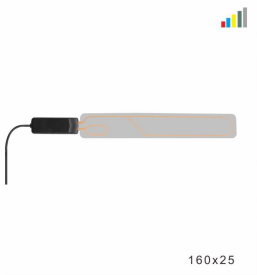
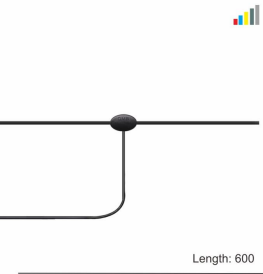
Radio Digital signal (Digital Audio Broadcasting had DAB for short) is the AM and FM the third generation s after the traditional analog Broadcasting radio, Digital radio signal, it provides a close to the voice of the C D quality, radio and opportunities for additional data services, has good noise, anti-jamming and wave propagation fading resistance, suitable for high-speed mobile reception, etc, to ensure a fixed, carry, and moves the quality of the received signal, the Digital radio stations send transmission distance is farther, coverage more widely.

DAB antenna schematic

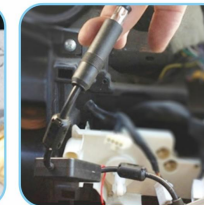


DAB antenna parameters

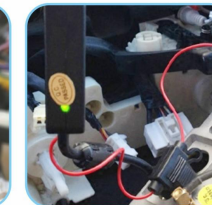
Frequency 频率范围 (MHz)	Gain 增益dBi	VSWR 驻波比	Voltage 工作电压
170~240MHz/ 1452~1492MHz	12dBi , 15dBi, 18dBi etc.	≤1.8	3-5V
Lighting Protection 保护电流	Impedance 阻抗Ω	Connector type 接头类型	Cable Type 线材类型
DC Ground	50	SMA , SMB, MCX,Fakra,etc.	RG58/RG174 or any can be customized



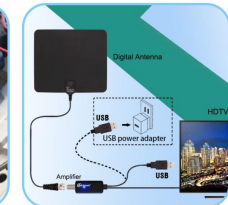
Pull out the original FM antenna



Connect the product to the antenna



Connect antenna positive level



Connect TV antenna mode

Specification

Antenna Type 天线类型	Frequency 频率范围 (MHz)	Voltage 工作电压 V	Current 工作电流 mA	VSWR 驻波比
FM/AM 天线	80-108MHz/ 530-2000kHz	DC10.5~16 (V)	10~35mA	≤3.0
Band 适用频段	Operation Temperature 工作温度	Impedance 阻抗Ω	Connector type 接头类型	Cable Type 线材类型
AM/FM	-35°C~+75°C	75	IEC/F/SMA or anycustomized	3C2V,1.5C -2V or anycan be customized

Frequency 频率范围 (MHz)	Gain 增益dBi	VSWR 驻波比 Db	Voltage 工作电压 V
DAB(174-240/L -Band : 1452-1492MHz) FM(88-108MHz) TV (174- 240/470 - 862MHz)	25dBi	≤1.5	5V
Current 电流 mA毫安	Impedance 阻抗Ω	Receive Range 接收范围	Connector type 接头类型
30-500mA	75	50-100miles	IEC/F/SMA or any customized

Vehicle Radio antenna & GPS Tracking Location Antenna

External GPS Tracking & Location Antenna with Multi-Band + GPS Integrated design

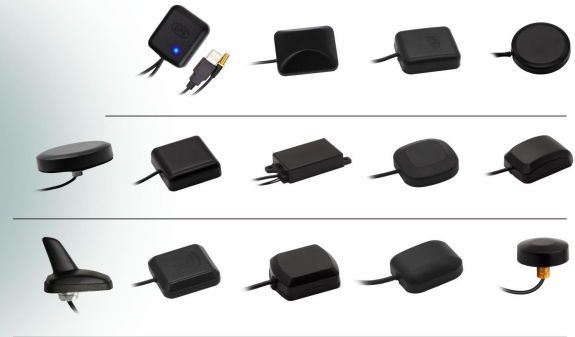
Ours GPS Antenna is the compact design with excellent Signal Amplification compatible with almost every GPS receiver model and provides an excellent alternative for a vast range for GPS Mobile applications including AVL, Vehicle Navigation, Aviation.

GPS Tracking & Location Antenna



Size: mm

Connector Type Options to GPS Antenna



External GPS Tracking & Location Antenna with Multi-Band + GPS Integrated design

GPS ceramic antenna



GPS History and Application:

The Global Positioning System (GPS) is currently the only fully functional Global Navigation Satellite System (GNSS). Utilizing a constellation of at least 24 medium Earth orbit satellites that transmit precise microwave signals, the system enables a GPS receiver to determine its location, speed and direction.

Developed by the United States Department of Defense, it is officially named NAVSTAR GPS (Contrary to popular belief, NAVSTAR is not an acronym for NAVigation Satellite Timing And Ranging, but simply a name given by Mr. John Walsh, a key decision maker when it came to the budget for the GPS program).

The satellite constellation is managed by the United States Air Force 50th Space Wing. The cost of maintaining the system is approximately US\$750 million per year, including the replacement of aging satellites, and research and development. Despite this fact, GPS is free for civilian use as a public good.

Shark fin





Ceiling Mount



Marine & Vehicle

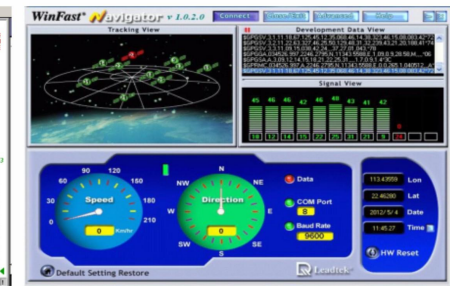
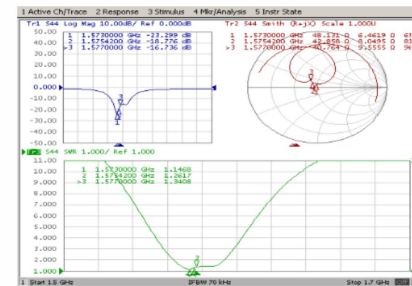


Frequency 频率范围(MHz)	Gain 增益dBi	VSWR 驻波比	Polarization 极化方式	DC Voltage 直流电压	Impedance 阻抗Ω
1575.42MHz ±1.02MHz	Passive 5dBi Active 29dBi	≤1.5	RHCP	3-5V	50
1602+0.5625*k(MHz)		≤1.5		3-5V	50
1561.0980MHz		≤1.5		3-5V	50
1197-1278/1559 1612MHz	90 dege eslevation: ≥ 6, 20 dege eslevation: ≥ 0 plane)	≤2.0		3-5V	50

DC current 直流电流	Max power 最大功率	Noise Figure 噪声系数	Filter Outband attenuation 滤波器带外衰减	Connector type 接头类型	Cable Type 线材类型
≤ 20mA	100W	≤2.0dB	7dB Min f0 +/-20MHZ; 20dB Min f0 +/-50MHZ; 30dB Min f0 +/-100MHZ ≥20 (fo±50MHZ); ≥30 (fo±100MHZ);	SMA/FAKRA/GT15/USB or anyother requested	RG174or anyother requested
25 ~ 40 mA			1268+100MHZ≥50db, 1197+100MHZ ≥50db; 1602+100MHZ≥50db, 1561-100MHZ ≥50db.		

Any Combination match for you choose(GPS / Glonass / Beidou etc.)

GPS antenna test chart



Omni outdoor fiberglass antenna

1400Mhz ~ 870Mhz, 900M / 1800M / 1900M and 2.4G/5Ghz systems
 Amplifier integrated active antenna
 Cable and Connector customizable
 High accuracy, high efficiency and high gain
 IROHS-Compliant.



Flat patch, Ceiling mount, Base station, Marine, Outdoor High Gain Antennas

High performance and rugged industrial design antennas are ideal for indoor and outdoor use. The antenna of different type options can be installed for either vertical or horizontal polarization.

- WLAN, Hotspot, GSM, ISM and MIMO for indoor/outdoor multipoint and extending applications.
- Outdoor, Marine and Vehicle Grade durable UV-stable housing or fiberglass radome weather-proof
- Providing broad coverage and different gain options, high performance and compact size
- GSM 850Mhz / 900Mhz / 1800Mhz / 1900Mhz / 2100Mhz & WLAN 2.4G / 5G and Multi-band systems
- ISM Band 433Mhz / 450Mhz / 868Mhz-870Mhz / 915Mhz / 928Mhz, Custom antennas can be designed on request
- Integral N-Female or TNC connector or extension cable end, cable & connector customizable
- IROHS-Compliant.



Flat Patch Antenna



High gain router

CW-FP009

CW-FP010

CW-FP011 CW-FP012

Base station antenna



RF Cable Assemblies

RF & Mini Coaxial Cable Assembly
 OD: 0.81/0.98/1.13/1.32/1.37/1.48mm
 RF Flexible & Semi-Rigid Cable Assembly
 RG/LMR low loss Coaxial Cable Assembly
 Pigtail Micro Coaxial Cable Assembly

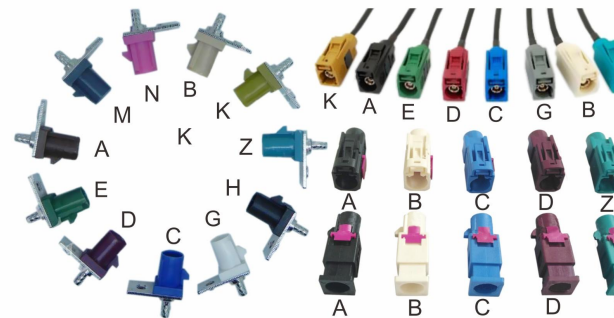
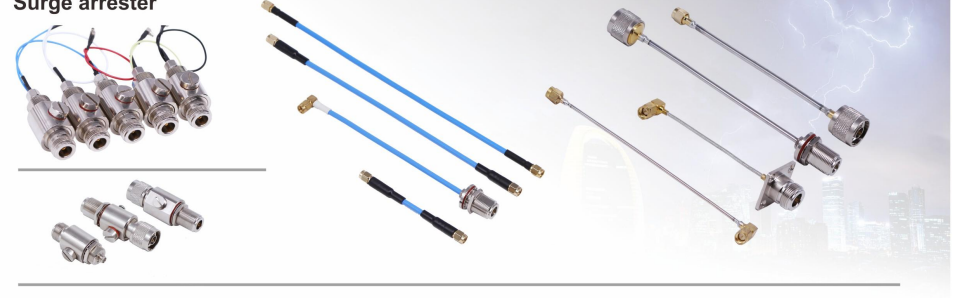


RF Coaxial Connectors

Wireless Communication
 Telecommunication Mobile
 Communication
 Satellite Communication
 Data Communication



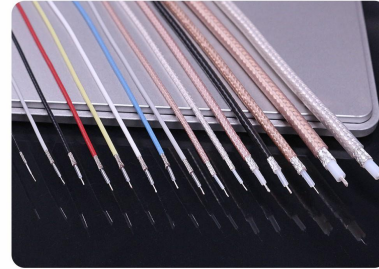
Surge arrester



Coding			
Description	jack	plug	color/RAL - Nr.
A Radio without phantom supply			Black9005
B Radio with phantom supply			White9001
C GPS telematics or navigation			Blue5005
D GSM Cellular phone			Bordeaux/violet 4004
E TV1			Green6002
F TV2			Brown9011
G Remote control keyless entry			Grey7031
H Radio controlled parking heating			Violet4003
I Bluetooth			Beige1001
K Radio with IF			Curry1027
Z Neutral coding			Waterblue5021

Specifications of coaxial cable

Specifications of coaxial cable

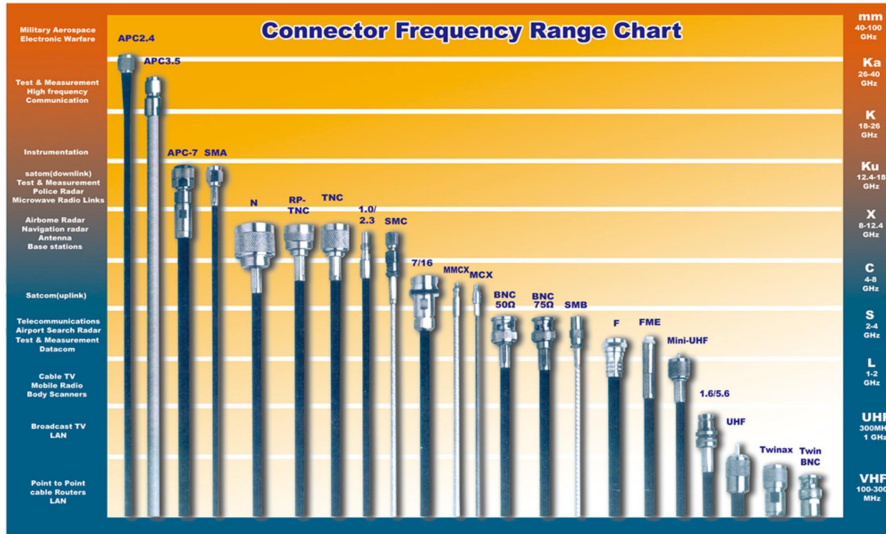


Cable Type No. 类型	Impedance 阻抗	Jacket 外被		Shield 屏蔽		Dielectric 绝缘体		Conductor 导体		Cable Loss v.s. Frequency (dB) 电纜损耗 V.S. 频率 (DB)												Max. Vol 最大耐压	Temp. 工作温度						
		Dia 直径	Material 材料	Dia 直径	Material 材料	Dia 直径	Material 材料	Dia 直径	Material 材料	0.9GHz	1.8GHz	2.5GHz	3.5GHz	6GHz	0.03GHz	0.1GHz	0.2GHz	0.4GHz	1GHz	2GHz	3GHz			4GHz	5GHz	11GHz			
O.D.0.81	50Ω	0.81	FEP	0.85	Ag-Cu	0.4	FEP	0.15	Ag-Cu	3	4.5	5.3	6.5	9.4														1000	-40/+200
O.D.1.13	50Ω	1.13	FEP	0.88	Ag-Cu	0.68	FEP	0.24	Ag-Cu	2	2.8	3.5	4.1	5.4														1000	-40/+200
O.D.1.32	50Ω	1.32	FEP	1.12	Ag-Cu	0.68	FEP	0.24	Ag-cu										2.1	3	3.7	4.3	5					-40/+90	
O.D.1.37	50Ω	1.37	FEP	1.18	TC	0.9	FEP	0.31	Ag-cu										1.7	2.5	3	3.5	4					-55/+200	
RG-178	50Ω	1.83	FEP	1.3	TCU	0.86	PTFE	7*0.102	TCU	1.4	2	2.2		4.3													1000	-55/+200	
RG316	50Ω	2.6	FEP	1.95	TCU	1.5	PTFE	0.54	TCU	0.8		1.4															1200	-55/+200	
RG-142/U	50Ω	5.232	FEP	0.12	SPC	2.946	PTFE	0.93	SPC						0.125		0.256	0.42			0.781		1.05				1200	-55/+200	
RG-188/U	50Ω	2.794	PTFE	1.95	SPC	1.524	PTFE	7*0.17	SPCCS						0.282		0.531	0.856			1.532						1200	-55/+250	
RG-196/U	50Ω	2.032	PVC/PE	1.3	SPC	0.864	PTFE	7*0.010	SPC						0.453		0.912	1.62									1000	-55/+250	
RG-400/U	50Ω	4.953	FEP	3.95	SPC	2.946	PTFE	19*0.203	SPC						0.144		0.295	0.482			0.883		1.184	1.899			1400	-55/+250	
SFF-50-1	50Ω	1.8	FEP	1.3	SPC	0.87	PTFE	1*0.30	SPC						0.33	0.453	0.85	0.912	1.457	3.4							100	-60/+200	
SFF-50-1.5-1	50Ω	2.55	FEP	1.92	SPC	1.5	PTFE	7*0.18	SPC						0.19	0.262	0.5	0.531	0.856		2						1200	-60/+200	
SFF-50-1.5-2	50Ω	2.9	FEP	2.4	SPC	1.52	PTFE	7*0.18	SPC						0.19	0.262	0.5	0.531	0.856		2						1200	-60/+200	
SFF-50-2-1	50Ω	3.3	FEP	2.6	SPC	2.2	PTFE	1*0.73	BC						0.12		0.31					1.27					2000	-60/+200	
SFF-50-2-2	50Ω	4	FEP	3.45	SPC	2.2	PTFE	7*0.26	BC						0.12		0.31					1.27					200	-60/+200	
SFF-50-3-1	50Ω	4.2	FEP	3.45	SPC	3	PTFE	1*0.94							0.086	0.125	0.23	0.256	0.42			0.95					1900	-60/+200	
SFF-50-3-2	50Ω	4.2	FEP	3.95	SPC	3	PTFE	7*0.34	SPCCS						0.086	0.125	0.23	0.256	0.42			0.95					1900	-60/+200	
SFF-75-1.5-1	75Ω	2.55	FEP	1.9	SPC	1.5	PTFE	7*0.10	SPC						0.268		0.549	0.883									2800	-60/+200	
SFF-75-1.5-2	75Ω	3.2	FEP	2.4	SPC	1.5	PTFE	7*0.10	SPC						0.266		0.541	0.869									1200	-60/+200	
SFF-75-3-1	75Ω	4.5	FEP	3.4	SPC	3	PTFE	1*0.55	SPC						0.125		0.31	0.49									1900	-60/+200	
SFF-95-3	75Ω	3.58	FEP	3	SPC	2.59	PTFE	7*0.10	SPC						0.207		0.42	0.677									1500	-60/+200	
RG-179/U	75Ω	2.388	FEP	1.9	TC/SPC	1.448	PTFE	7*0.102	SPC						0.266		0.541	0.869									1200	-55/+200	
RG-187/U	75Ω	2.794	PTFE	2.04	SPC	1.6	PTFE	7*0.102	SPCCS						0.266		0.541	0.869									1200	-55/+250	

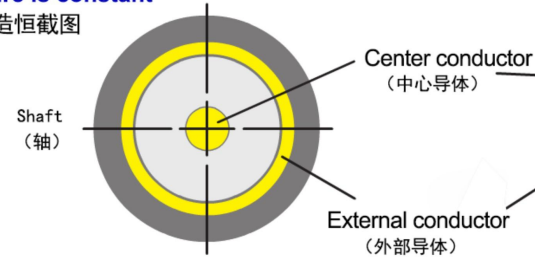
Cable Type No. 类型	Impedance 阻抗	Jacket 外被		Shield 屏蔽		Dielectric 绝缘体		Conductor 导体		Cable Loss v.s. Frequency (dB) 电纜损耗 V.S. 频率 (DB)												Max. Vol 最大耐压	Temp. 工作温度								
		Dia 直径	Material 材料	Dia 直径	Material 材料	Dia 直径	Material 材料	Dia 直径	Material 材料	1MHz	10MHz	30MHz	100MHz	0.9GHz	1.8GHz	2.5GHz	3.5GHz	6GHz	0.05GHz	0.1GHz	0.15GHz			0.2GHz	0.25GHz	0.35GHz	0.4GHz	0.55GHz	0.8GHz	1GHz	3GHz
RG-174/U	50Ω	2.6	PVC	2.05	TCU	1.52	PE	7*0.16	BCU						0.89	1.4	1.7	2.1	3.5										1500	-40/+80	
RG58/U	50Ω	4.95	PVC	3.45	TC	2.95	PE	19*0.18	TCU						0.37	0.41	0.9		1.7									1900	-40/+80		
RG58A/U	50Ω	4.9	PVC	0.13	TC	2.946	PE	19/0.2	TC																			1900	-40/+80		
RG58C/U	50Ω	5.08	PVC	0.13	TC	2.946	PE	19/0.180	TC					4.7														1900	-40/+80		
RG-213/U	50Ω	10.287	PVC	0.18	OFC	7.239	PE	7*0.752	OFC						0.066								0.141			0.24		5000	-40/+80		
RG-223/U	50Ω	5.486	PVC	3.95	SPC	2.946	PE	1*0.889	SPC						0.131								0.269			0.44	0.814	1.099	1.775	1400	-25/+70
RG-214/U	50Ω	10.795	PVC/PE	0.16	SPC	7.239	PE	7*0.752	SPC						0.066								0.141			0.24	0.646	1.109	5000	-40/+80	
5D-FB	50Ω	7.5	PVC	5.7	TC	5	PE	1*1.80	BC						6.3	7.8		10.8	12.1	13					18.9			-25/+70			
3D-FB	50Ω	5	PVC/PE	3.55	TC	3	PE	1*1.00	OFC						10.4	13		17.5	19.5	21					30			-25/+70			
7D-FB	50Ω	9.8	PVC/PE	8	TC	7.3	PE	1*2.60	BC						4.3	5.3		7.3	8.3	9					13.1			-25/+70			
8D-FB	50Ω	11.1	PVC/PE	8.6	TC	7.8	PE	1*2.80	OFC						5.2	6.1		7.3	8.2	8.6					12.3			-25/+70			
10D-FB	50Ω	13	PVC/PE		TC	10	PE	1*3.50	OFC									4.1	4.8	5.5	6.2	7			10			-25/+70			
5C-FB(75-5)	75Ω	7	PVC			4.7	PE	1*1.00	BC/TC						4.4										9			13.2			
6C-FB(75-5)	75Ω	7.8	PVC			5.7	PE	1*1.00	BC/TC						3.8											10.8			16.3		
7C-FB(75-5)	75Ω	90.2	PVC			6.9	PE	1*1.16	BC/TC						3											9.2			12.8		
9C-FB(75-5)	75Ω	11.2	PVC			8.7	PE	1*2.05	BC/TC						2.3																
RG-6/U	75Ω	7.2	PVC			4.7	PE	1*1.0	BC/TC	7.9	2.8	48	92																		
RG-59/U	75Ω	6	PVC			3.71	PE	1*0.643	BC/TC	10	2.8	66	125																		
RG-62/U	75Ω	6	PVC			3.71	PE	1*0.643	BC/TC	11	5.9	66	102																		

BC.OFC.TC.SPC/Ag-Cu.CCA.CCAM.CCS.SPCCS.
AL.PE.LDPE.PVE.FEP.PTFE.SFT.SFF.

Copper tube.Termary Alloy Plated Seamless.
Tin Plated Copper tube.Nickel plated Seamless.



A shot of the cable structure is constant
线缆构造恒截面图



Coaxial detail

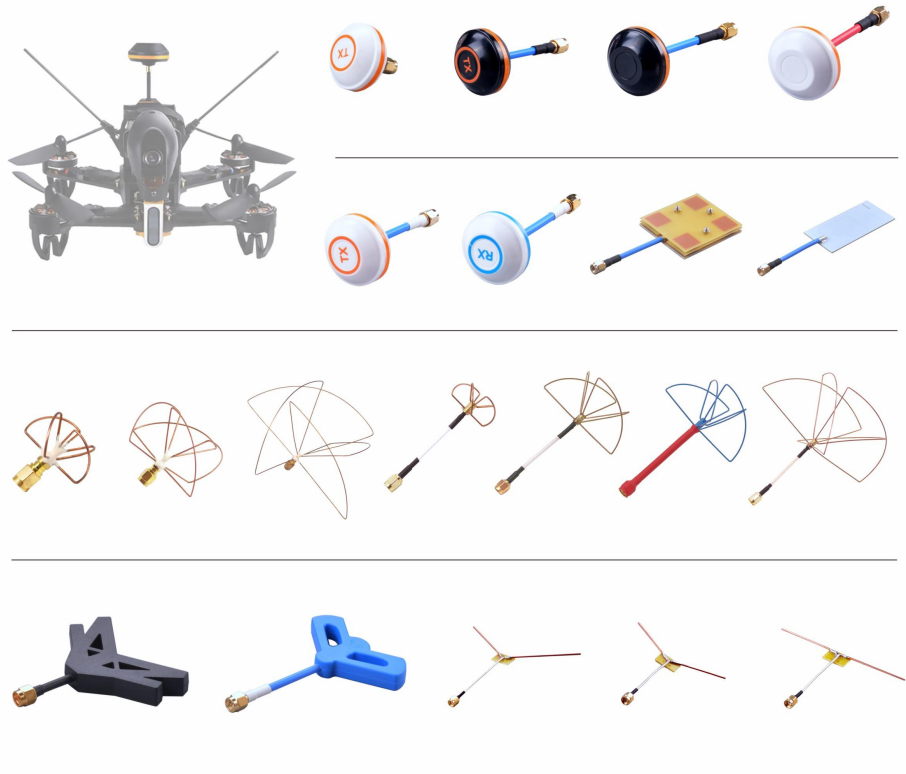
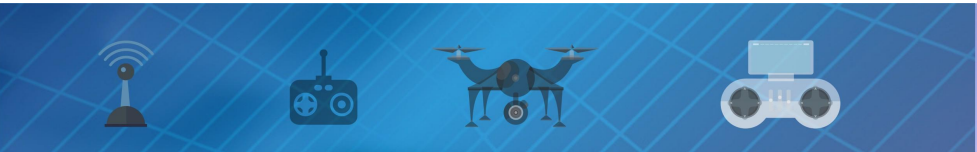
Coaxial means that the inner conductor and the outer conductor are on the same axis. The inner conductor ACTS as the transmission channel and the outer conductor ACTS as the transmission loop. Inner conductors are usually single (or concentric) bare or tinned copper. External conductors can be braided or wound with tin-plated copper or bare copper (some manufacturers use copper clad steel, aluminum or magnesium alloy wire, etc.) to cut prices. The basic structure of coaxial is the inner conductor + insulation + outer conductor + outer sheath.

Cable Type No. 类型	Impedance 阻抗	Jacket 外被		Dielectric 绝缘体		Conductor 导体		Cable Loss v. s. Frequency (dB) 电缆损耗 V. S. 频率 (DB)						
		Dia 直径	Material 材料	Dia 直径	Material 材料	Dia 直径	Material 材料	0.5G	0.1GHz	5GHz	10GHz	20GHz	Max. Vol 最大耐压	Temp. 工作温度
SFT047/50	50	1.19	Copper tube Ternary Alloy Plated Seamless Tin Plated Copper tube Nickel plated Seamless	0.94	PTFE	0.29	SPC/SPCCS	0.79	1.13	2.59	3.74	5.44	1000	-55/+125
SFT086/50	50	2.2	Copper tube Ternary Alloy Plated Seamless Tin Plated Copper tube Nickel plated Seamless	1.68	PTFE	0.52	SPC/SPCCS	0.45	0.64	1.51	2.22	3.29	1000	-55/+125
SFT141/50	50	3.58	Copper tube Ternary Alloy Plated Seamless Tin Plated Copper tube Nickel plated Seamless	3	PTFE	0.93	SPC/SPCCS	0.26	0.38	0.91	1.37	2.09	1000	-55/+125
SFT250/50	50	6.35	Copper tube Ternary Alloy Plated Seamless Tin Plated Copper tube Nickel plated Seamless	5.31	PTFE	1.65	SPC/SPCCS	0.16	0.23	0.58	0.89	1.57	1000	-55/+125

Cable Type No. 类型	Impedance 阻抗	Jacket 外被		Shield 编制		Dielectric 绝缘体		Conductor 导体		Cable Loss v. s. Frequency (dB) 电缆损耗 V. S. 频率 (DB)														
		Dia 直径	Material 材料	Dia 直径	Material 材料	Dia 直径	Material 材料	Dia 直径	Material 材料	0.9GHz	1.8GHz	2.5GHz	6GHz	0.05GHz	0.1GHz	0.15GHz	0.3GHz	0.4	0.45GHz	0.5GHz	0.96GHz	Max. Vol 最大耐压	Temp. 工作温度	
LMR - 100	50Ω	2.79	PE	2.11	TCU	1.55	PE	1*0.46	BCU	0.7	1.1	1.3	2.1										2000	-40/+85
LMR - 195	50Ω	4.95	PE	3.53	TC	2.79	PE	1*0.94	OFC					8.53		14.43	20.74			25.6	26.95	37.3	3000	-40/+85
LMR - 200	50Ω	4.95	PE	3.66	TCU	2.95	PE	1*1.12	BCU	0.32	0.46	0.55	0.96										3000	-40/+85
LMR300	50	7.62	PVC/PE		TC	4.83	PE	1*1.78	OFC														2000	-40/+85
LMR - 400	50Ω	10.29	PE	8.13	TC	7.24	PE	1*2.70	CCA					2.92		4.92	7.2			8.86	9.39	13.22	3000	-40/+85

Drone transmission antenna

Uav antenna
 VR headset antenna
 Image transmission antenna
 Three leaf, four leaf antenna, mushroom antenna, Y branch antenna, etc.



Antenna Type 天线类型	Style 外观款式	Frequency 频率范围 (MHz)	Gain 增益dBi	VSWR 驻波比
FPV Antenna	3leaf,4leaf,Mushroom, Patch,Panel, Spring helical, Pagodoany customized.	800/900/1.2GHz/1.4GHz /1.5GHz 2.4GHz/5.8GHz (5.7GHz - 5.9GHz)	1dBi,2dBi,3dBi,5dBi, 8dBi,12dBetc.	≤1.5
Votage 工作电压	Poarization 极化方式	Impedance 阻抗Ω	Connector type 接头类型	Cable Type 线材类型
3-5V	RHCP	50	SMA Male/RP-SMA Male/MMCX/IPEXetc.	RG316/RG141/OD 1.13 or other requested

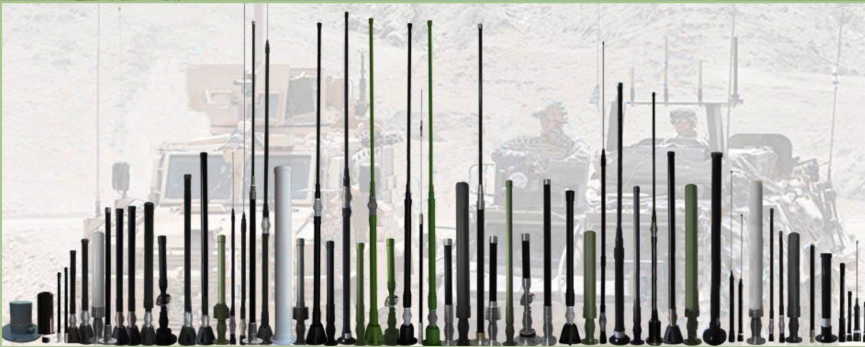
Antenna Type 天线类型	Return loss 回波损耗 (S11)	Votage 工作电压	Gain 增益dBi
FPV remote control antenna	2.4-2.7G (-25) 5.8G(-20)	6.31	16dBi
VSWR 驻波比	Poarization 极化方式	Connector type 接头类型	Cable Type 线材类型
≤1.3	RHCP	SMA Male/ RP-SMA Male/ MMCX/ IPEXetc.	RG316/ RG141/ OD 1.13or other requested

Anti-drone system



Range of application

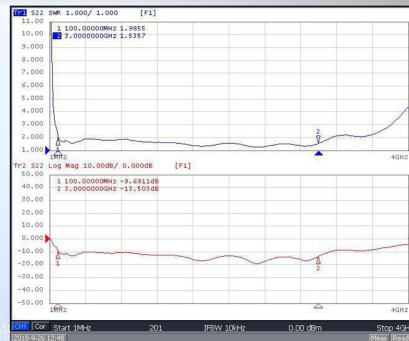
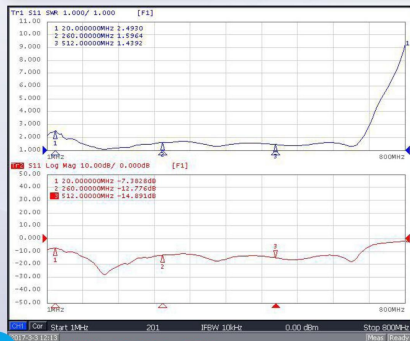




Low frequency broadband antenna

Frequency Range(频率范围)

0-80MHz,	280-320MHz,	100-500MHz,	500-2500MHz,
20-88MHz,	300-500MHz,	100-512MHz,	500-3000MHz,
20-100MHz,	300-512MHz,	100-1300MHz,	566-678MHz,
20-512MHz,	340-470MHz,	110-500MHz,	700-1000MHz,
30-100MHz,	400-480MHz,	120-250MHz,	800-1200MHz,
30-225MHz,	400-500MHz,	120-300MHz,	2300-2700MHz,
30-512MHz,	400-700MHz,	130-1000MHz,	2300-6000MHz,
30-800MHz,	400-800MHz,	135-174MHz,	2400-2500MHz,
80-120MHz,	420-460MHz,	135-475MHz,	2500-3000MHz,
90-400MHz,	430-470MHz,	225-400MHz,	2600-2700MHz,
90-500MHz,	480-520MHz,	230-500MHz,	2700-3000MHz,
100-300MHz,	500-700MHz,	230-512MHz,	3400-3600MHz,
100-400MHz,	500-1000MHz,	250-400MHz,	7.4-8.4GHz,



一车间 First workshop



二车间 The second workshop



三车间 The third workshop

