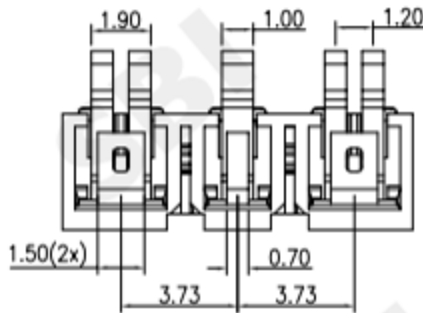
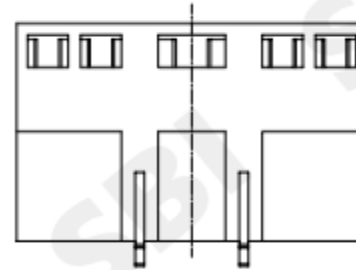
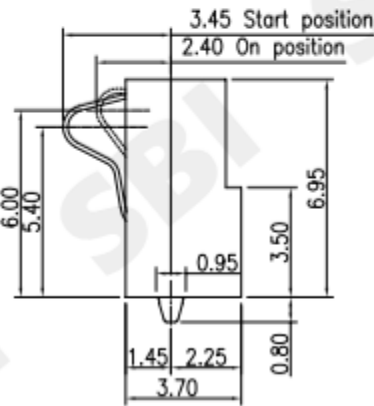
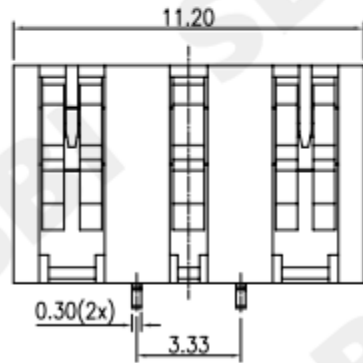
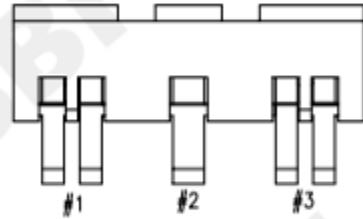


RoHS Compliant

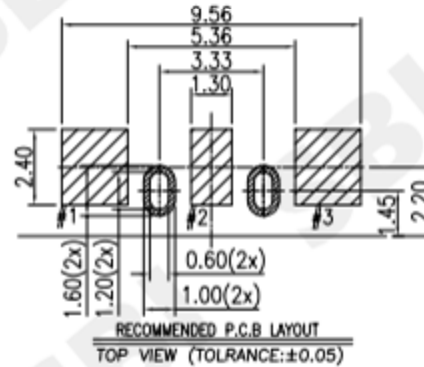
SYMBOL	REVISION	APPROVAL	DATE

SPECIFICATIONS

- ELECTRICAL CHARACTERISTICS:
 - 1-1.RATING: DC 20V 3A
 - 1-2.CONTACT RESISTANCE: 20mΩ MAX(INITAL)
 - 1-3.DIELECTRIC WITHSTANDING VOLTAGE: 500V AC FOR ONE MINUTE
 - 1-4.INSULATION RESISTANCE: 100MΩ MIN,MEASURED BY 500V DC
- FORCE:1.8-2.0mm CONTACT TRAVEL:600gf Max.
- LIFE TEST:MECHANICAL LIFE TEST 10,000 CYCLES.
- PACKING:BAG(700PCS/BAG)



SCHMATIC



No.	DESCRIPTION	MATERIAL	PLATING
1	CONTACT TERMINAL	BeCu	Au PLATED
2	HOUSING	LCP	BLACK
3	EARTH TERMINAL	C2680	Sn PLATED

SMART BILLION INDUSTRIAL LIMITED

COPYRIGHT RESERVED,PLEASE DO NOT COPY.

PART NAME	CONNECTOR	DRAWING	Z.L.Liang	DWG.No.	CLO031
PART NO.	CL-039S	CHECK	G.C.Chen	REV.	A0
UNIT : mm	TOLERANCE UNLESS OTHERWISE SPECIFIED X.X ± 0.3 X.XX ± 0.2 X.XXX ± 0.1	ANGLE	G.C.Chen	DATE	2019-Aug-01
		SCALE	1:1	PAGE	1 OF 1