

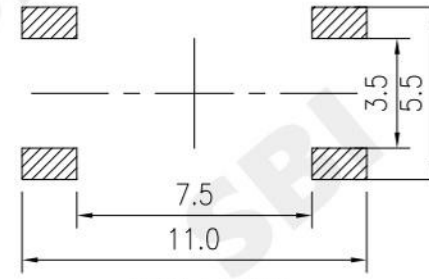
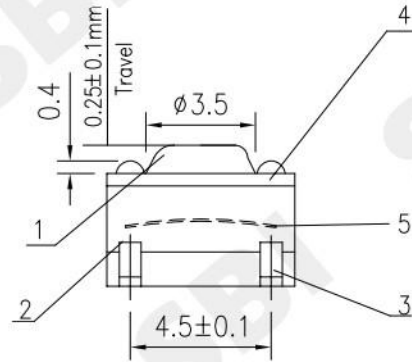
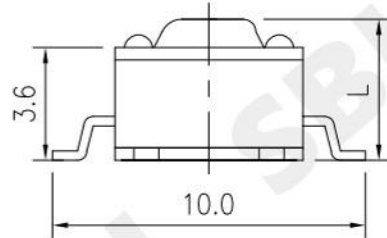
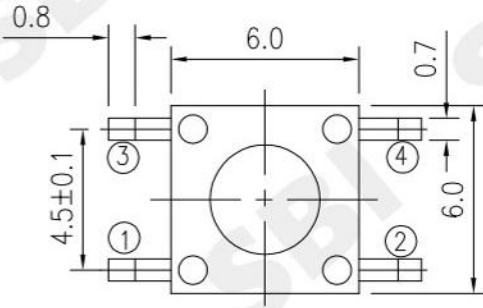
RoHS
Compliant

PART No.	KNOB LENGTH(L)
TS-1143SL	4.30mm
TS-1150SL	5.00mm
TS-1160SL	6.00mm
TS-1170SL	7.00mm
TS-1180SL	8.00mm
TS-1195SL	9.50mm
TS-11-110SL	11.00mm
TS-11-130SL	13.00mm

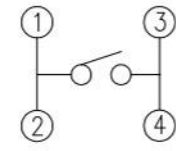
SYMBOL	REVISION	APPROVAL	DATE

SPECIFICATIONS

- ELECTRICAL CHARACTERISTICS:
 - 1-1.RATING: DC 12V 50mA
 - 1-2.CONTACT RESISTANCE: 100mΩ MAX(INITAL)
 - 1-3.DIELECTRIC WITHSTANDING VOLTAGE: 250V AC FOR ONE MINUTE
 - 1-4.INSULATION RESISTANCE: 100MΩ MIN,MEASURED BY 500V DC
- MECHANICAL PERFORMANCE
 - 2.1.OPERATING FORCE :160±30gf;250±50gf
- LIFE TEST
 - 3.1.3-1.ELECTRONICS LIFE TEST 100,000 CYCLES.



P.C.B LAYOUT
TOP VIEW



CIRCUIT

NO.	PARTS	MATERIAL	QTY.	FINISHING
5	CONTACT	SUS	1	Ag CLAD
4	COVER	SPCC	1	Ni PLATED
3	TERMINAL	C2680	4	Ag PLATED
2	CASE	PPA	1	BLACK
1	KNOB	PPA	1	BLACK

SMART BILLION INDUSTRIAL LIMITED

COPYRIGHT RESERVED,PLEASE DO NOT COPY.

PART NAME		TACT SWITCH		DRAWING	Z.L.Liang	DWG.No.	SBT15
PART NO.		TS-1143SL-160		CHECK	G.C.Chen	REV.	A
	UNIT: mm	TOLERANCE UNLESS OTHERWISE SPECIFIED	UP TO 5 ±0.2	ANGLE	APPROVAL	DATE	2020-09-10
			ABOVE 5~30 ±0.3			30°	PAGE
			ABOVE 30 ±0.5		SCALE	1:1	
			ANGLE ±3°				