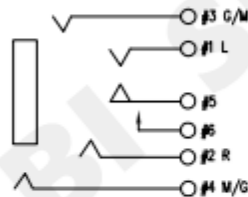
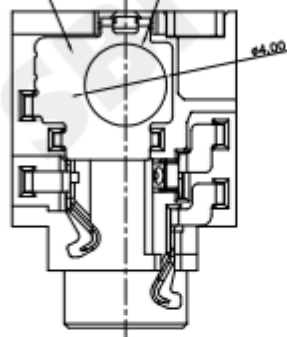
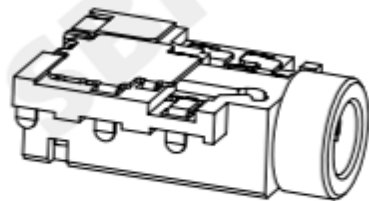


RoHS
Compliant

DATE CODE AREA(Y Y M M D D)

PICK & PLACE AREA



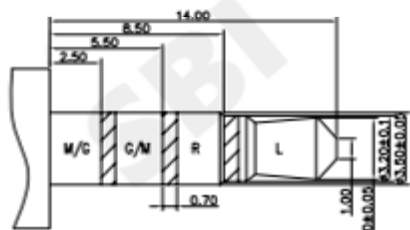
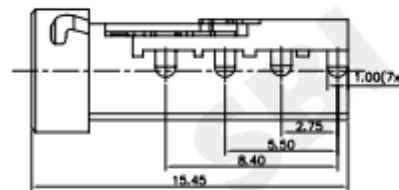
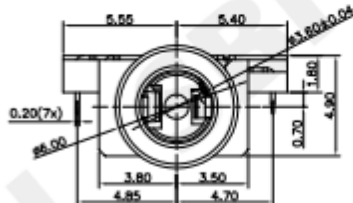
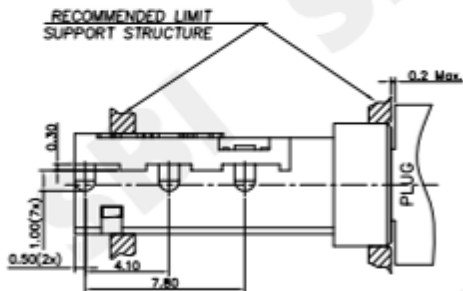
SCHMATIC

SPECIFICATIONS

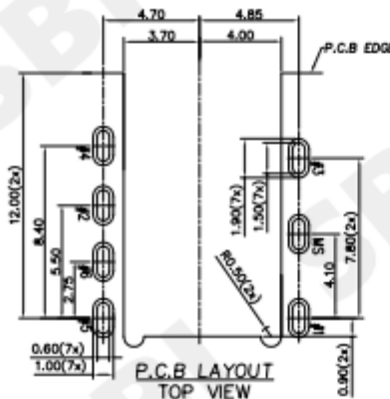
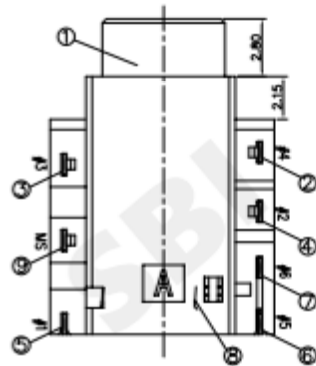
- ELECTRICAL CHARACTERISTICS:
 - 1-1.RATING: DC 12V 1A
 - 1-2.CONTACT RESISTANCE: 50mΩ MAX(INITIAL)
 - 1-3.DIELECTRIC WITHSTANDING VOLTAGE: 500V AC FOR ONE MINUTE
 - 1-4.INSULATION RESISTANCE: 100MΩ MIN,MEASURED BY 500V DC
- MECHANICAL CHARACTERISTICS:
 - 2-1.INSERTION FORCE: 1.0Kgf-2.5Kgf(AFTER 5 INSERTION CYCLES);
 - 2-2.WITHDRAWAL FORCE: 0.6Kgf-1.8Kgf(AFTER 5 INSERTION CYCLES);
- LIFE TEST: 3,000 CYCLES MIN
AFTER LIFE TEST.CONTACT RESISTANCE:100mΩ MAX.
- AFTER HUMIDITY TEST,INSULATION RESISTANCE:50MΩ MIN,
- PACKING: TAPE & REEL
- FOR HAND SOLDERING LEAD FREE PROCESS
- PRINTED DATE CODE "YY MM DD ON TOP OF CONNECTOR

YY MM DD

DD: DAY
MM: MONTH
YY: YEAR



ø3.5 MATING PLUG



9	SHELL	C5210-EH 0.2T	1	Ni 60μ" Min.
8	SEPARATOR	PA10T UL 94V0	1	BLACK
7	MAKE TERMINAL	C5210-EH 0.2T	1	G/F ON CONTACT AREA; G/F FLASH ON SOLDER AREA; ALL OVER 50μ" NL.
6	TRANSFER TERMINAL	C5210-EH 0.2T	1	G/F OR 30μ" ON CONTACT AREA; G/F FLASH ON SOLDER AREA; ALL OVER 50μ" NL.
5	TIP SPRING	SUS301 1/2H 0.2T	1	G/F OR 30μ" ON CONTACT AREA; G/F FLASH ON SOLDER AREA; ALL OVER 50μ" NL.
4	RING A	C5210-EH 0.2T	1	G/F OR 30μ" ON CONTACT AREA; G/F FLASH ON SOLDER AREA; ALL OVER 50μ" NL.
3	RING B	C5210-EH 0.2T	1	G/F OR 30μ" ON CONTACT AREA; G/F FLASH ON SOLDER AREA; ALL OVER 50μ" NL.
2	EARTH	C5210-EH 0.2T	1	G/F OR 30μ" ON CONTACT AREA; G/F FLASH ON SOLDER AREA; ALL OVER 50μ" NL.
1	BODY	PA10T UL 94V0	1	BLACK
No.	DESCRIPTION	MATERIAL	QTY.	PLATING

SMART BILLION INDUSTRIAL LIMITED

COPYRIGHT RESERVED,PLEASE DO NOT COPY.

PART NAME		AUDIO JACK		DRAWING		Z.L.Liang		DWG.No.	
PART NO.		ST-3597-TR		CHECK		G.C.Chen		REV. A0	
UNIT :	TOLERANCE UNLESS OTHERWISE SPECIFIED	UP TO 5	±0.2	ANGLE	APPROVAL	G.C.Chen	DATE	2020/09/17	
		ABOVE 5 ~30	±0.3						
mm		ABOVE 30	±0.5	0±3'	SCALE	1:1	PAGE	1 OF 1	