

RoHS
Compliant

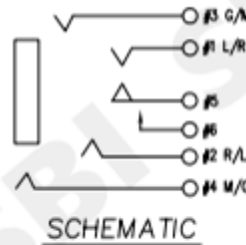
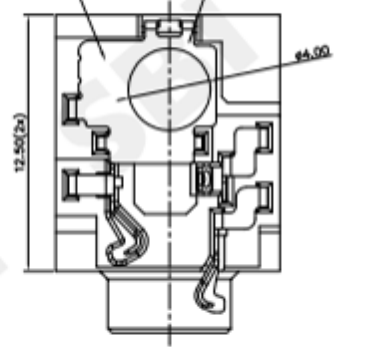
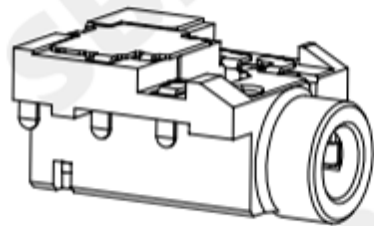
SYMBOL	REVISION	APPROVAL	DATE

SPECIFICATIONS

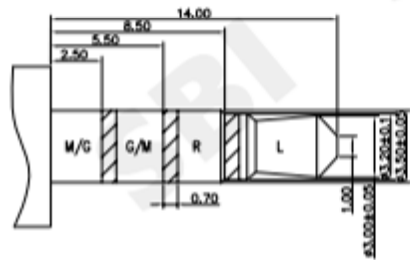
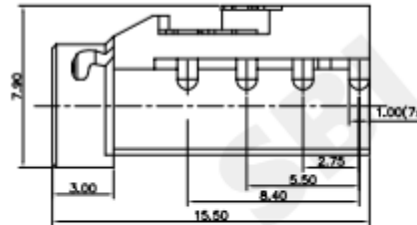
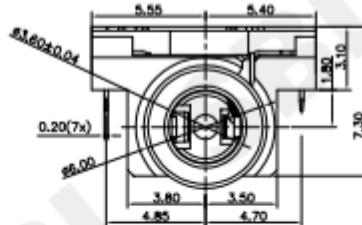
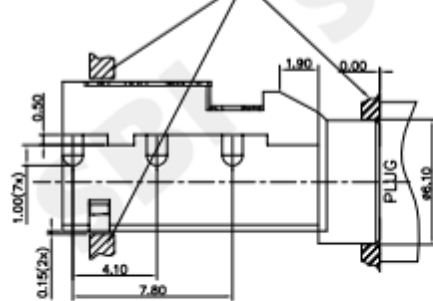
- ELECTRICAL CHARACTERISTICS:
 - 1-1.RATING: DC 12V 1A
 - 1-2.CONTACT RESISTANCE: 50mΩ MAX(INITIAL)
 - 1-3.DIELECTRIC WITHSTANDING VOLTAGE: 500V AC FOR ONE MINUTE
 - 1-4.INSULATION RESISTANCE: 100MΩ MIN,MEASURED BY 500V DC
- MECHANICAL CHARACTERISTICS:
 - 2-1.INSERTION FORCE: 1.0Kgf-2.5Kgf(AFTER 5 INSERTION CYCLES);
 - 2-2.WITHDRAWAL FORCE: 0.6Kgf-1.8Kgf(AFTER 5 INSERTION CYCLES);
- LIFE TEST: 3,000 CYCLES MIN
AFTER LIFE TEST,CONTACT RESISTANCE:100mΩ MAX.
- AFTER HUMIDITY TEST,INSULATION RESISTANCE:50MΩ MIN.
- PACKING:TAPE & REEL
- FOR HAND SOLDERING LEAD FREE PROCESS
- PRINTED DATE CODE"YY MM DD ON TOP OF CONNECTOR

YY MM DD
 DD: DAY
 MM: MONTH
 YY: YEAR

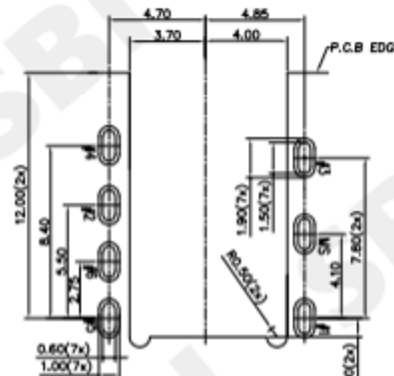
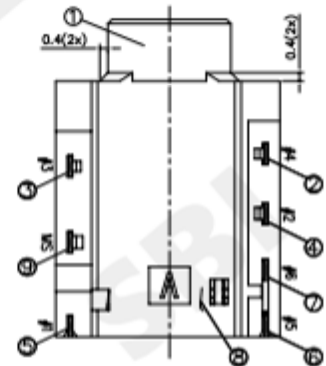
DATE CODE AREA(YMMDD) PICK & PLACE AREA



RECOMMENDED LIMIT SUPPORT STRUCTURE



φ3.5 MATING PLUG



P.C.B LAYOUT
TOP VIEW

9	SHELL	C5210-EH 0.2T	1	NI 60u" Min.
8	SEPARATOR	PA10T UL 94V0	1	BLACK
7	MAKE TERMINAL	C5210-EH 0.2T	1	G/F ON CONTACT AREA; G/F FLASH ON SOLDER AREA; ALL OVER 50u" NL
6	TRANSFER TERMINAL	C5210-EH 0.2T	1	G/F OR 30u" ON CONTACT AREA; G/F FLASH ON SOLDER AREA; ALL OVER 50u" NL
5	TIP SPRING	SUS301 1/2H 0.2T	1	G/F OR 30u" ON CONTACT AREA; G/F FLASH ON SOLDER AREA; ALL OVER 50u" NL
4	RING A	C5210-EH 0.2T	1	G/F OR 30u" ON CONTACT AREA; G/F FLASH ON SOLDER AREA; ALL OVER 50u" NL
3	RING B	C5210-EH 0.2T	1	G/F OR 30u" ON CONTACT AREA; G/F FLASH ON SOLDER AREA; ALL OVER 50u" NL
2	EARTH	C5210-EH 0.2T	1	G/F OR 30u" ON CONTACT AREA; G/F FLASH ON SOLDER AREA; ALL OVER 50u" NL
1	BODY	PA10T UL 94V0	1	BLACK
No.	DESCRIPTION	MATERIAL	QTY.	PLATING

SMART BILLION INDUSTRIAL LIMITED

COPYRIGHT RESERVED,PLEASE DO NOT COPY.

PART NAME		AUDIO JACK		DRAWING	Z.L.Liong	DWG.No.	
PART NO.		ST-3596-TR		CHECK	G.C.Chen	REV.	A0
UNIT : mm	TOLERANCE UNLESS OTHERWISE SPECIFIED	UP TO 5	±0.2	APPROVAL	G.C.Chen	DATE	2020/09/20
		ABOVE 5 ~30	±0.3			SCALE	1:1
		ABOVE 30	±0.5				
		ANGLE	±3°				